

COLLECTION
2021

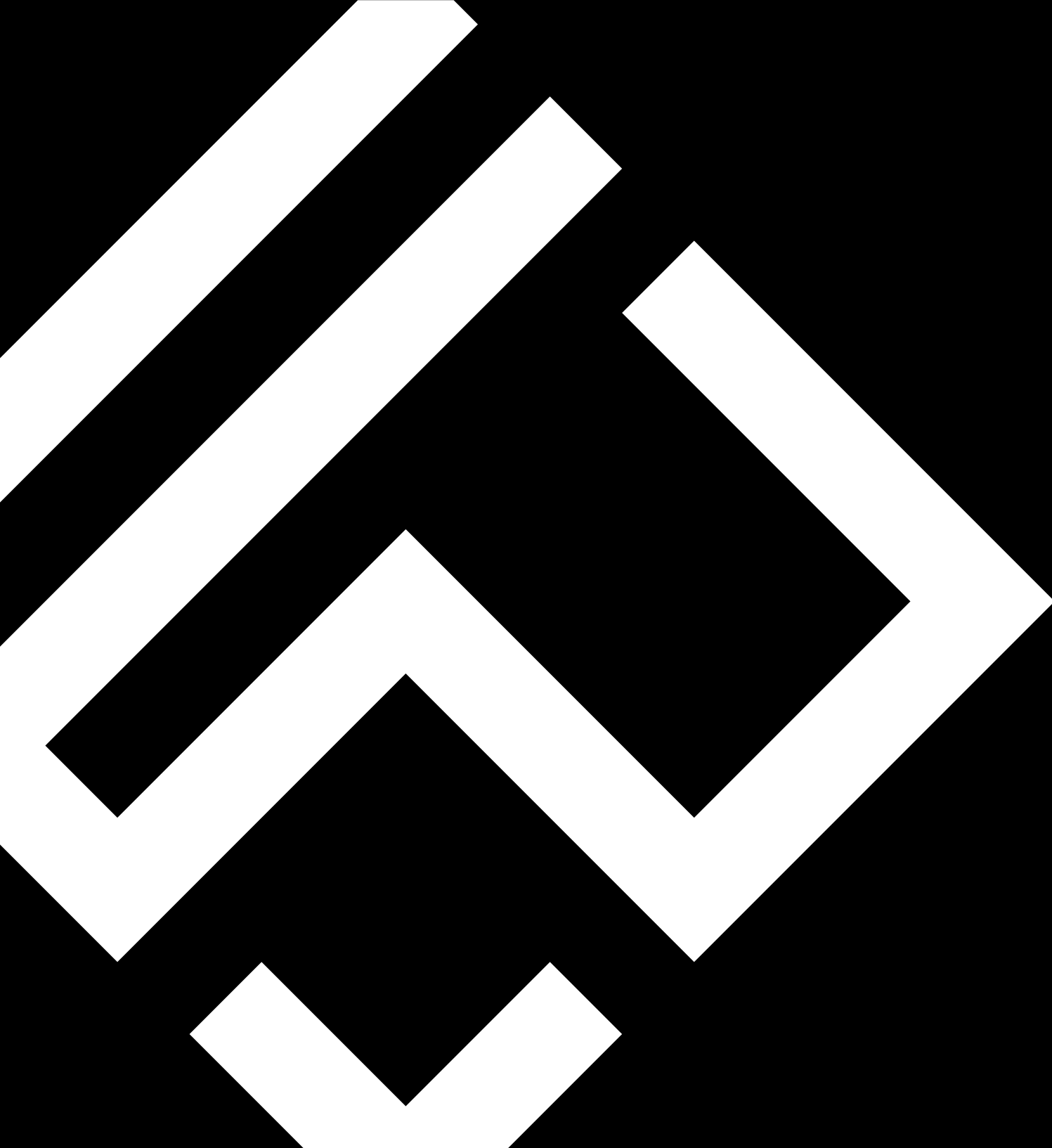


WWW.VOXFLOOR.EU



COLLECTION
2021





▼
COLLECTION
2021



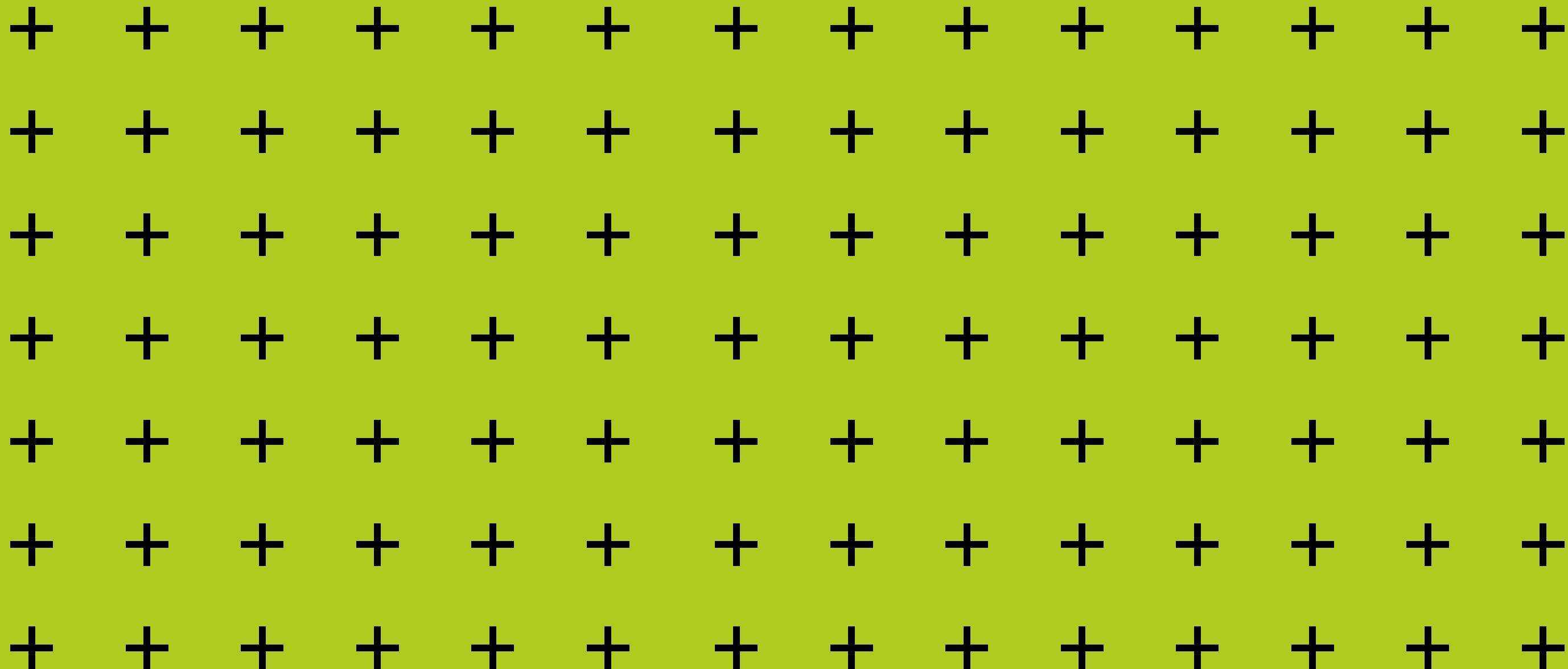
Filozofia firmy

Działać właściwie i zarządzać odpowiedzialnie to wyznacznik moralnej postawy firmy VOXFLOOR. Obliguje nas to do wykraczania daleko poza wyznaczone prawem zobowiązania w zakresie ochrony środowiska, odpowiedzialności socjalnej oraz korzyści. Choć podstawą działalności firmy VOXFLOOR jest produkcja unikalnych wzorniczo wykładzin obiektowych to w swej szeroko pojętej działalności społecznej nie zapominamy o pomocy bliźnim. Tym całkiem małym jak i tym trochę starszym. Dofinansowanie i organizacja zajęć pozaszkolnych, wycieczki krajoznawcze, obozy tematyczne dla młodzieży to tylko kilka spośród wielu form działalności charytatywnej i wspierającej, w które się angażujemy.

W Polsce wspieramy organizacje społeczne i fundacje takie jak PCK oraz DKMS.

Dbłość o środowisko naturalne czynne i bierne jest fundamentem wpisanym w długoterminowe relacje firma – otoczenie.

WWW.VOXFLOOR.EU



NOWWE
KOLLEKTIOE

COLLECTION  2021

WWW.VOXFLOOR.EU

WWW.VOXFLOR.EU

▼
COLLECTION
2021

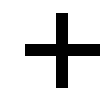


SENSE COLLECTION SPECIFICATION

Style Name: SENSE
Construction: Multi-level Loop
Fiber: Voxflor Certified Nylon
Gauge: 1/12"
Stitches: 9 per inch
Average Pile Height: 4.0 mm ± 0.5 mm
Total Thickness: 6.6 mm ± 0.5 mm
Backing: EcoAce-Bac
Tile size: 25 cm * 100 cm

Sense is a complete palette of grays and beige tones. It has been developed on a 750 den. Yarn system, thanks to which can offer a dense and vivid color look. It offers an overall elegant feeling and by the chance of using it in single color or in multiple shades combination, playing with its planks laying can generate infinite results. Designer can play with its similar tones, creating sort of fading effects or with more different colors, for a heavier contrast result.

01. **NOWE**
KOLEKCJE



SENSE
COLLECTION

SENSE
COLLECTION



75008 MINERAL GRAY



75017 GRAY SHOWER



75026 DUSTBLU



75010 OUTERSPACE



75020 ONLINE



75007 WALL STREET



75018 ROCK GRAY



75030 ARGOS



75036 CITYSCAPE



75009 BLACK OF NIGHT



75034 IRON ORE



75023 STEEL WOOL



75014 SERIOUS GRAY



75019 PASSIVE



75005 MORNING FOG



75015 NETWORK GRAY



75029 RODEO



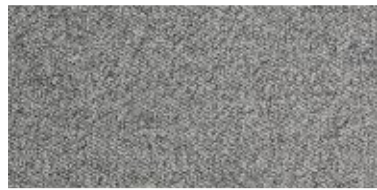
75032 TIN LIZZIE



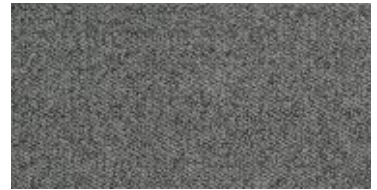
75016 TRICON BLACK



75024 GIBRALTAR



75002 AFRICAN GRAY



75003 LET IT RAIN



75006 DIOR GRAY



75004 LAZY GRAY



75022 CORNWALL SLATE



75035 PEPPERCORN



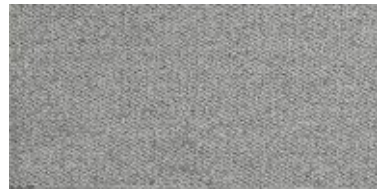
75028 PROPER GRAY



75013 CAVIAR



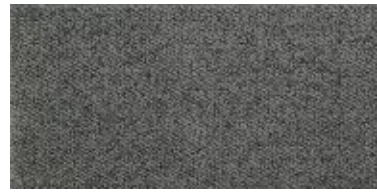
75027 INKWELL



75001 ICICLE



75011 DOWNING SLATE



75025 GRANITE PEAK



75012 GRAY SCREEN



75021 STORM

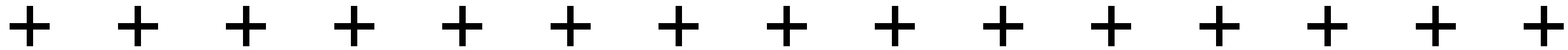


75031 GRAY MATTERS



75033 MINDFUL GRAY

01.



NOWE KOLEKCJE

WWW.VOXFLOR.EU

▼
COLLECTION
2021



SCANDINAVIA COLLECTION SPECIFICATION

Style Name: SCANDINAVIA
Construction: Tufted Cut and Loop
Fiber: Voxflor Certified Nylon
Gauge: 1/10"
Stitches: 10 per inch
Average Pile Height: 4.0 mm ± 0.5 mm
Total Thickness: 6.6 mm ± 0.5 mm
Backing: EcoAce-Bac
Tile size: 25 cm * 100 cm

The collection is composed by three products: Aarup, Almhult and Molde. Aarup is based on a linear texture, Almhult crosses two main directions in its design, so to generate more movement, while Molde offers a more flat and calm feeling. With an elegant and dynamic design, it takes its best look by using a combination of two or even three products together. The collection comes with a scale of five grays, three beige and an intermediate color. Molde, moreover, has an additional selection of colors to expand the design options by introducing accents.

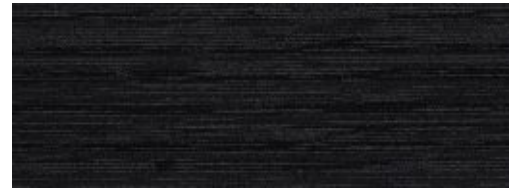
O2. **NOWE**
KOLEKCJE



SCANDINAVIA
COLLECTION



SCANDINAVIA
COLLECTION



AARUP 100



AARUP 500



AARUP 900



ALMHULT 400



ALMHULT 800



MOLDE 300



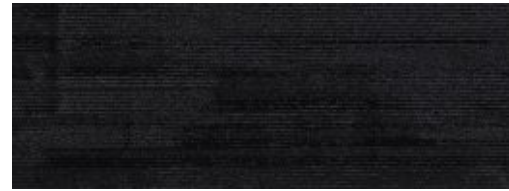
MOLDE 700



AARUP 200



AARUP 600



ALMHULT 100



ALMHULT 500



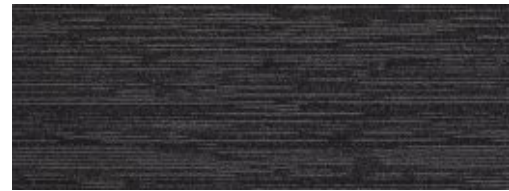
ALMHULT 900



MOLDE 400



MOLDE 800



AARUP 300



AARUP 700



ALMHULT 200



ALMHULT 600



MOLDE 100



MOLDE 500



MOLDE 900



AARUP 400



AARUP 800



ALMHULT 300



ALMHULT 700

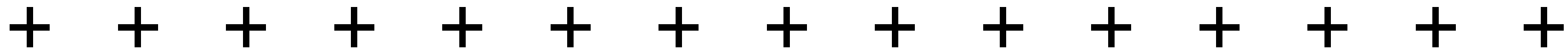


MOLDE 200



MOLDE 600

O2.



NOWE KOLEKCJE

WWW.VOXFLOR.EU

COLLECTION
2021

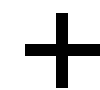


SPIRAL SPECIFICATION

Style Name: SPIRAL
Construction: Multi-level Loop
Fiber: Voxflor Certified Nylon
Gauge: 1/12"
Stitches: 12 per inch
Average Pile Height: 4.0 mm ± 0.5 mm
Total Thickness: 6.6 mm ± 0.5 mm
Backing: EcoAce-Bac
Tile size: 25 cm * 100 cm

With a multi-Level Loop construction, Spiral collection offers an innovative option that transports you to a calm environment thanks to its organic design and subtle colors. It offers smooth base colors which can be combined with the color accent version in order to create innovative pattern designs. It features the EcoAir-bac Pro which makes it lighter and easier to transport without affecting its resistance.

O3. NOWE
KOLEKCJE



SPIRAL



SPIRAL



75001



75002



75003



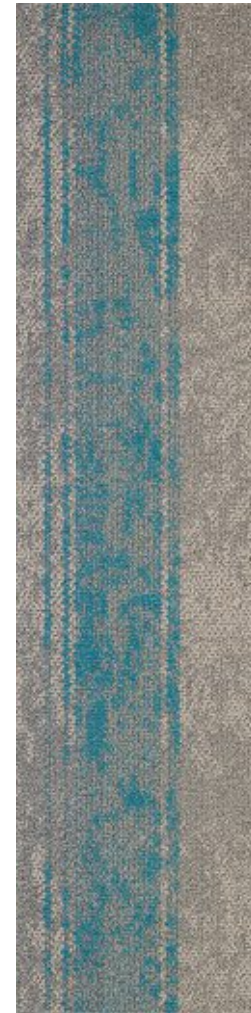
75004



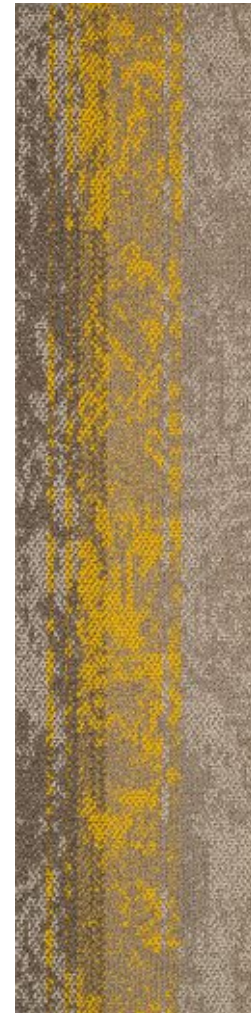
75005



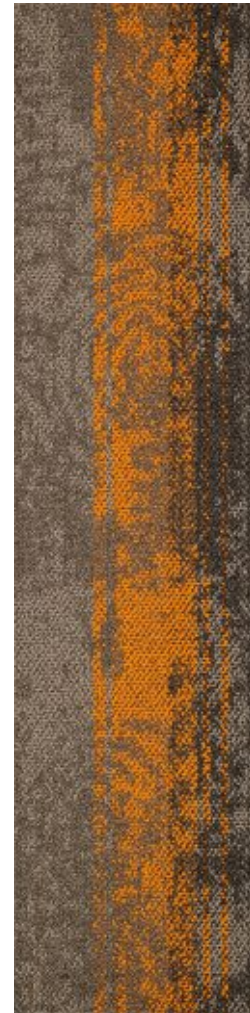
75006



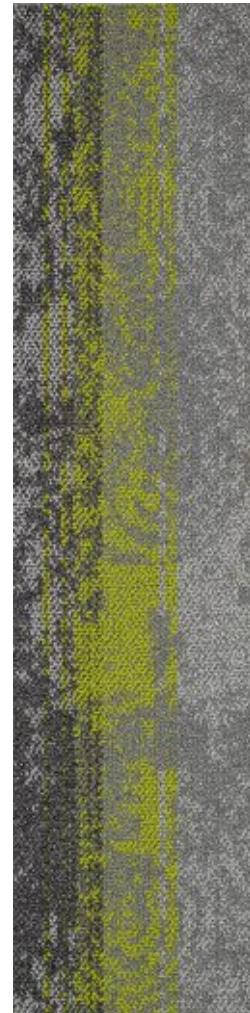
75001 PLUS



75002 PLUS



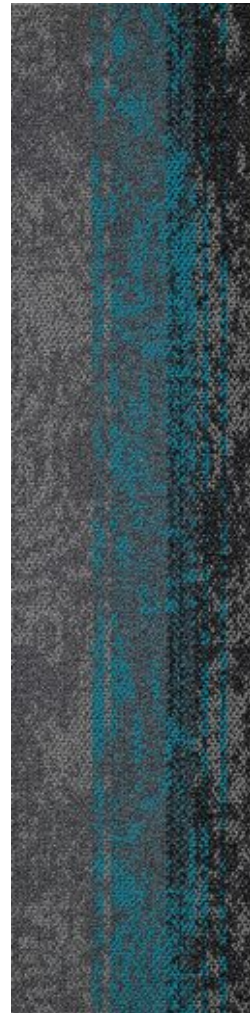
75003 PLUS



75004 PLUS



75005 PLUS



75006 PLUS



03.



NOWE KOLEKCJE

WWW.VOXFLOR.EU

COLLECTION
2021



VOXFLOR®
EUROPE

MONDRIAN

SPECIFICATION

Style Name: MONDRIAN
Construction: Multi-level Loop
Fiber: Voxflor Certified Nylon
Gauge: 1/12", 1/10"
Stitches: 10 - 13 per inch
Average Pile Height: 4.0 mm ± 0.5 mm
Total Thickness: 6.6 mm ± 0.5 mm
/ 8.0 mm ± 0.5 mm
Backing: EcoAce-Bac
Tile size: 25 cm * 100 cm

Taking inspiration from the artworks of Piet Mondrian, and from the whole Bauhaus movement, this collection offers three different level of aspect and carpet construction. Mondrian 100 offers a unique and dynamic base, Mondrian 200 adds thin lines of color accents while Mondrian 300 completes the collection with squares of full color, completing the collection geometry and adding a ticker pile product to provide additional movement of the flooring composition adding different stepping feeling.

04. **NOWE**
KOLEKCJE



MONDRIAN



MONDRIAN



100-75001



200-75002



200-75003



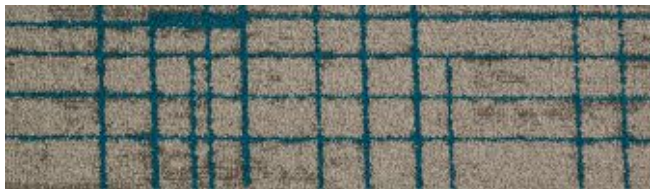
300-75001



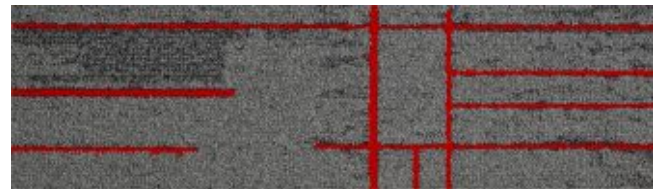
300-75004



100-75002



200-75003



200-75004



300-75001 basic



300-75004 basic



100-75003



200-75001 basic



200-75004 basic



300-75002



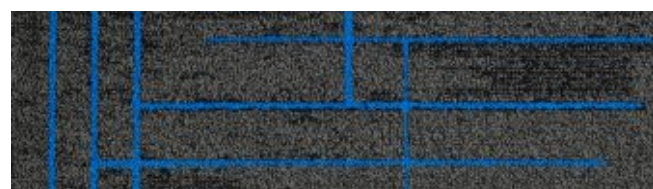
300-75005



100-75004



200-75002

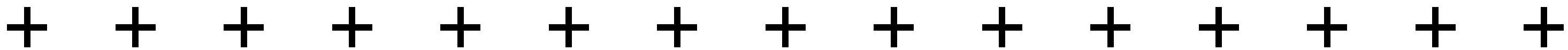


200-75005



300-75003

04.



NOWE KOLEKCJE

WWW.VOXFLOR.EU

▼
COLLECTION
2021



TWILIGHT SPECIFICATION

Style Name: TWILIGHT
Construction: Cut Pile
Fiber: Invista Nylon 66
Gauge: 5/64"
Stitches: 11 per inch
Average Pile Height: 3.0 mm ± 0.5 mm
Total Thickness: 5.3 mm ± 0.5 mm
Backing: EcoAce-Bac
Tile size: 50 cm * 50 cm

Every tile of Twilight is unique. This is achieved thanks to its special piece dyed system. It takes its inspiration from the ancient tie-dye Japanese technique. It's a cut pile product, that guarantees a special soft touch feeling and makes it perfect for all those low traffic areas which require at the same time something unique elegant and artistic.

+

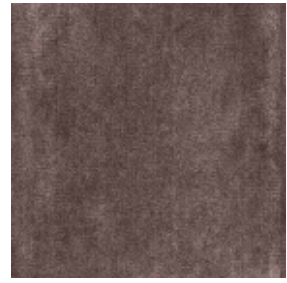
O5. ART.
KOLEKCJE



05.
TWILIGHT



01



04



07



10



02



05



08



11



03



06



09



12



ART. KOLEKCJE



COLLECTION
2021

WWW.VOXFLOOR.EU



ART.
КОЛЛЕКЦИЯ

WWW.VOXFLOR.EU

COLLECTION
2021



NATURAL CODE SPECIFICATION

Style Name: NATURAL CODE
Construction: Multi-level Loop & Tip Shear
Fiber: Solutia Nylon 66
Gauge: 1/12"
Stitches: 10 per inch
Average Pile Height: 4.0 mm ± 0.5 mm
Total Thickness: 6.6 mm ± 0.5 mm
Backing: EcoAce-Bac
Tile size: 50 cm * 50 cm

Virgin forest and untouched wild habitat are the backgrounds where this collection finds its roots. Pure and natural patterns wisely mixed with soft and delicate colors are the keys of this product. Its construction of Multi-level loop Nylon 6,6 fiber provides an excellent resistance and durability. It comes in tiles and it's perfect for all those places in which the nature of the materials shapes the interior design by themselves

06. ART.
KOLEKCJE

NATURAL
CODE



NATURAL CODE



01



04



07



10



13



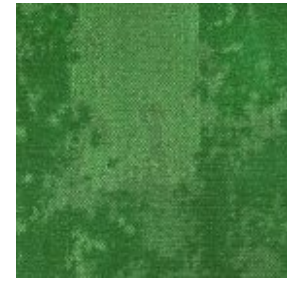
16



19



22



25



02



05



08



11



14



17



20



23



26



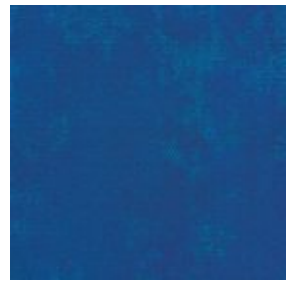
03



06



09



12



15



18



21



24



06.



ART. KOLEKCJE

WWW.VOXFLOR.EU

↓
COLLECTION
2021



STRIKEOUT STRIKE SPECIFICATION

Style Name: STRIKE/STRIKEOUT
Construction: Multi-level Loop & Tip Shear
Fiber: Invista antron Nylon 66
Gauge: 1/12"
Stitches: 11 per inch
Average Pile Height: 4.0 mm ± 0.5 mm
Total Thickness: 6.6 mm ± 0.5 mm
Backing: EcoAce-Bac
Tile size: 50 cm * 50 cm

Infinite solutions can be adopted by using Strike collections. It's composed by a base tile and one with color accents, in which multi-directional linear patterns create infinite dynamics in the flooring design. Thanks to its composition, its color accents match perfectly with the Eurogarden collection in order to allow the designer to play with the two collections as if they were part of a larger family.

07. ART.
KOLEKCJE

STRIKEOUT
STRIKEOUT



STRIKE / STRIKEOUT



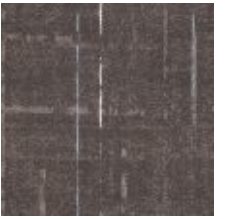
102



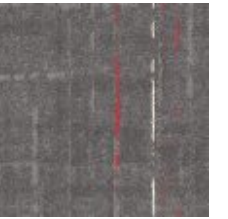
133



224



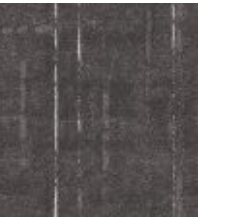
293



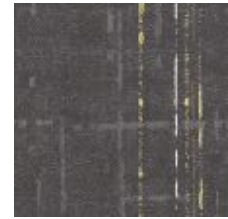
322



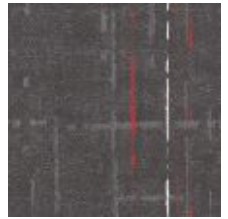
342



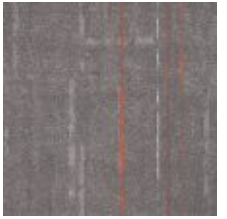
3507



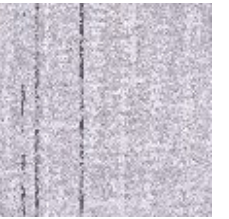
425



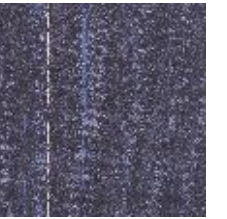
435



556



675



736



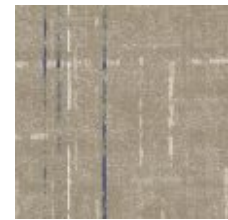
875



STRIKEOUT 001



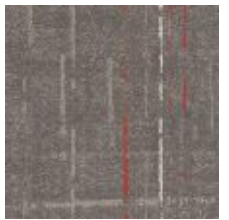
STRIKEOUT 005



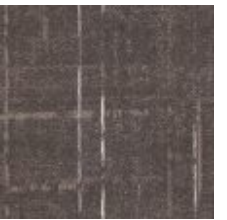
119



202



235



2507



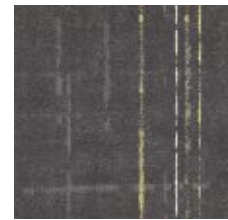
333



347



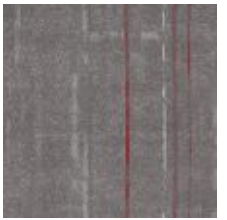
404



426



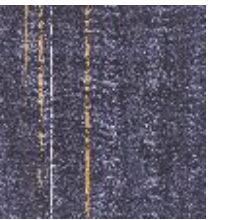
531



559



6510



742



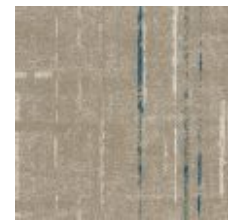
895



STRIKEOUT 002



STRIKEOUT 006



121



212



299



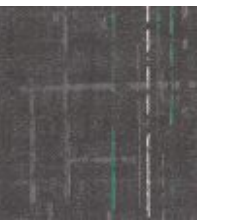
302



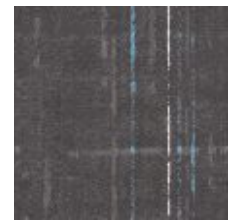
335



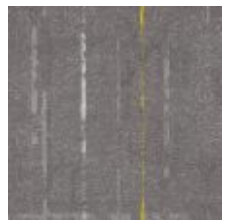
353



420



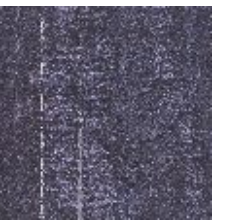
429



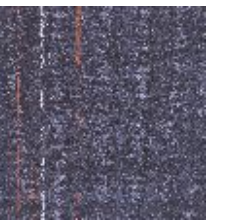
543



571



799



787



STRIKEOUT 003



STRIKEOUT 007



123



219



259



319



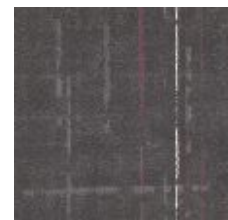
321



398



424



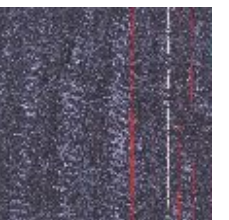
432



545



612



735



812



STRIKEOUT 004



STRIKEOUT 008

07.



ART. KOLEKCJE

WWW.VOXFLOR.EU

↓
COLLECTION
2021



LANDSCAPE SPECIFICATION

Style Name: LANDSCAPE
Construction: Multi-level Loop
Fiber: Voxflor Certified Nylon,
Voxflor Certified Nylon + Antron Legacy Nylon 66
Voxflor Certified Nylon + Antron Legacy Nylon 66
Gauge: 1/10"
Stitches: 10 per inch / 9 per inch
Average Pile Height: 5.0 mm ± 0.5 mm
Total Thickness: 9.0 mm ± 0.5 mm
Backing: EcoAce-Bac
Tile size: 25 cm * 100 cm

Two different base product, one with a stone-like effect, the other with a bark looking pattern, together with a full color product and an intermediate which allows a soft fading transition from one to the other, Landscape, with its multi-level construction, offers limitless solutions to the designer. Mixing colors, patterns and creating infinite combinations, taking inspiration from the natural environment, this collection is perfect for innovative, young and fresh working places.

08. ART.
KOLEKCJE

LANDSCAPE



LANDSCAPE



STONE 10000



STONE PLUS 13586



STONE PLUS 13704



STONE PLUS 15324



STONE EDGE 13586



STONE EDGE 13704



STONE EDGE 15324



STONE 20000



STONE PLUS 22131



STONE PLUS 23586



STONE PLUS 26740



STONE EDGE 22131



STONE EDGE 23586



STONE EDGE 26740



STONE 30000



STONE PLUS 30244



STONE PLUS 33936



STONE PLUS 38561



STONE EDGE 30244



STONE EDGE 33936



STONE EDGE 38561



BARK 10000



BARK PLUS 10244



BARK PLUS 14282



BARK PLUS 17352



BARK EDGE 10244



BARK EDGE 14282



BARK EDGE 17352



BARK 20000



BARK PLUS 20244



BARK PLUS 23586



BARK PLUS 27352



BARK EDGE 20244



BARK EDGE 23586



BARK EDGE 27352



MOSS 8561



BARK 30000



BARK PLUS 32131



BARK PLUS 34282



BARK PLUS 36740



BARK EDGE 32131



BARK EDGE 34282



BARK EDGE 36740



MOSS 7352



MOSS 2131



MOSS 3586



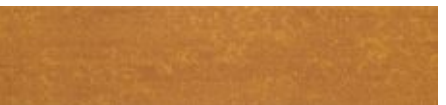
MOSS 3704



MOSS 3936



MOSS 0244



MOSS 4282



MOSS 5324



MOSS 6740

08.



ART. KOLEKCJE

WWW.VOXFLOR.EU

COLLECTION
2021



SKETCH SPECIFICATION

Style Name: SKETCH
Construction: Multi-level Loop
Fiber: Voxflor Certified Nylon
Gauge: 1/10"
Stitches: 12 per inch
Average Pile Height: 4.0 mm ± 0.5 mm
Total Thickness: 6.6 mm ± 0.5 mm
Backing: EcoAce-Bac
Tile size: 50 cm * 50 cm / 25 cm * 100 cm

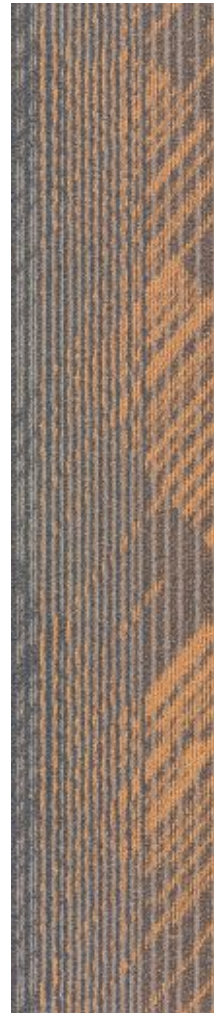
Sketches, freehand drawings, and kids art. opens the way for this collection. It's composed by a base product and an accent color mone, which shares the same multi-level Nylon 6 construction. It comes both in planks and tiles, in order to increase even more the design composition options and to make this product even more playful, as its nature could suggest. Highly recommended in educational, informal and cheerful environments.

09. ART.
KOLEKCJE

SKETCH



SKETCH



501



502



503



504



505



506



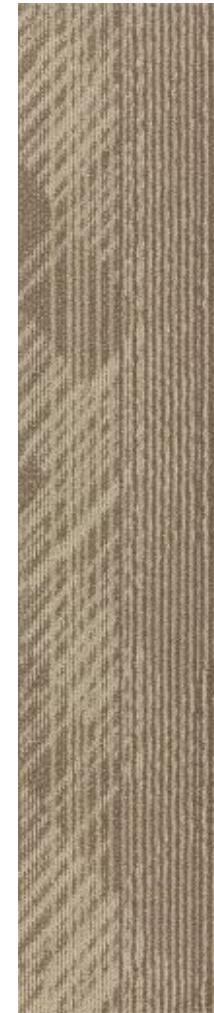
100



200



300



400



500



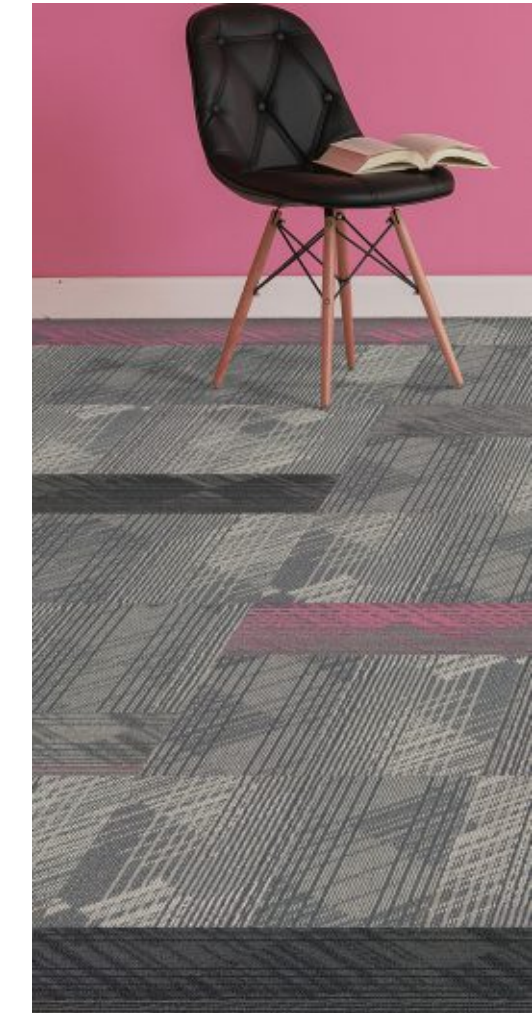
600



700



800



09.



ART. KOLEKCJE

WWW.VOXFLOR.EU

COLLECTION
2021



INTERWEAVE SPECIFICATION

Style Name: INTERWEAVE
Construction: Multi-level Loop
Fiber: PA Voxflor Certified
Gauge: 1/12"
Stitches: 10 per inch
Average Pile Height: 4.0 mm ± 0.5 mm
Total Thickness: 6.6 mm ± 0.5 mm
Backing: EcoAce-Bac
Tile size: 25 cm * 100 cm

A soft and delicate pattern enhances a selection of neutral gray and beige colors, plus a series of color accents, to multiply the designer options. Pure and clean patterns as well as more creative solutions can be generated through the usage of this collection. Simple or articulated but, never flat.

10. ART.
KOLEKCJE

INTERWEAVE



INTERWAVE



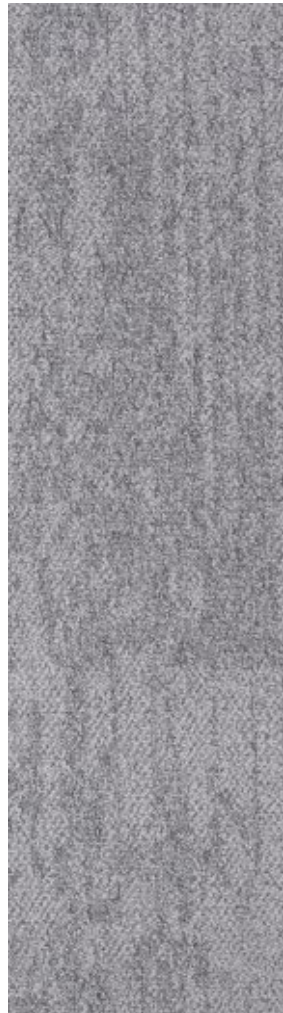
01



02



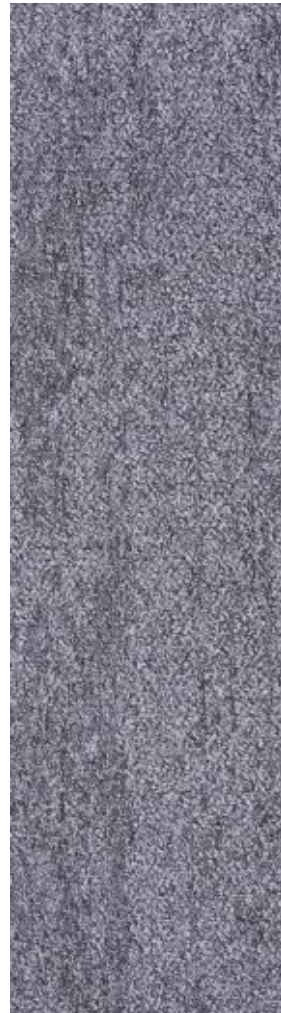
03



04



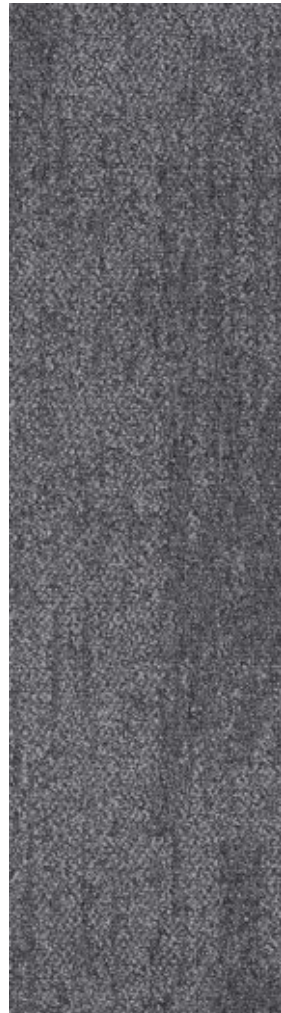
05



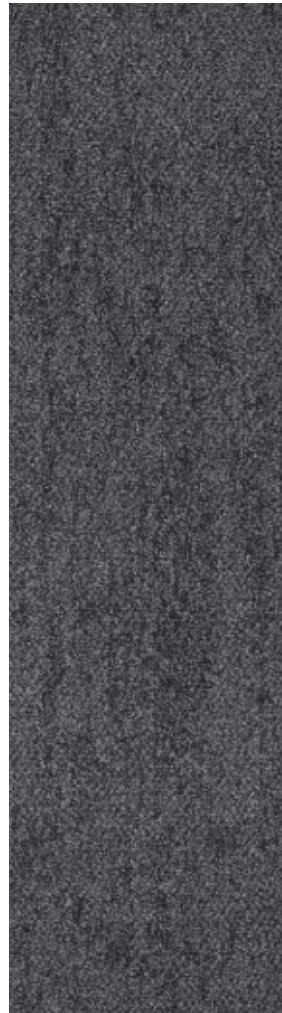
06



07



08



09



10



10.



ART. KOLEKCJE

WWW.VOXFLOR.EU

COLLECTION
2021



WATERFALL SPECIFICATION

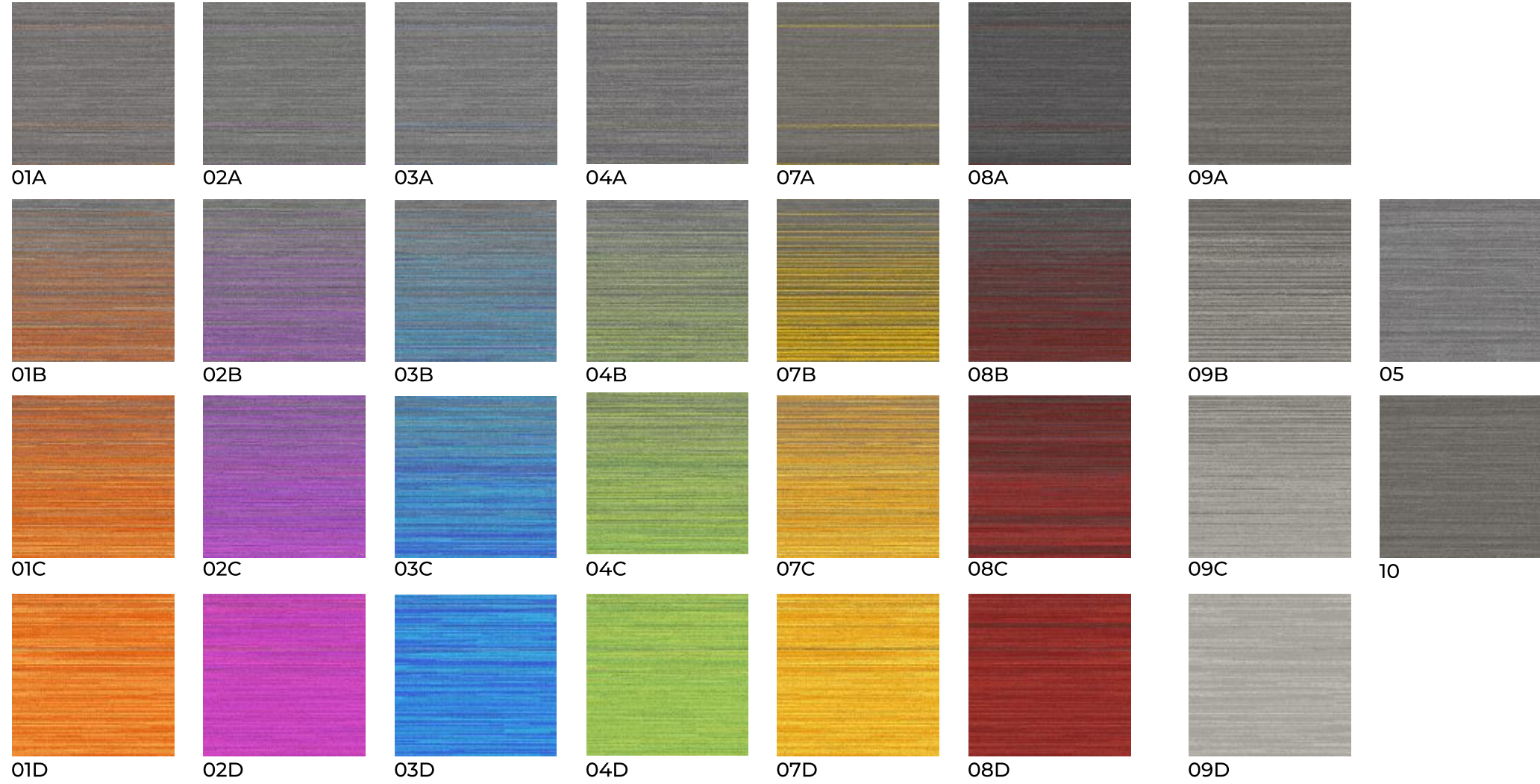
Style Name: WATERFALL
Construction: Multi-level Loop
Fiber: Voxflor Certified Nylon
Gauge: 1/12"
Stitches: 11 per inch
Average Pile Height: 4.0 mm ± 0.5 mm
Total Thickness: 6.6 mm ± 0.5 mm
Backing: EcoAce-Bac
Tile size: 50 cm * 50 cm

Is one of the VOXFLOOR classics. The patterns in its complete extension, is 2 meters long and provides a smooth fading effect from gray to full color. It can be used both with its complete set of 4 tiles or with just a shorter selection of tiles to achieve more unique floor patters.

12. ART.
KOLEKCJE



WATERFALL



12.



ART. KOLEKCJE

WWW.VOXFLOR.EU

COLLECTION
2021



SILVER SEA SPECIFICATION

Style Name: SILVER SEA
Construction: Multi-level Loop
Fiber: Voxflor Certified Nylon
Gauge: 1/12"
Stitches: 10 per inch
Average Pile Height: 3.5 mm ± 0.5 mm
Total Thickness: 6.1 mm ± 0.5 mm
Backing: EcoAce-Bac
Tile size: 25 cm * 100 cm / 50 cm * 50 cm

Like the rays of the sun reflection on the sea waves make them sparkle like silver, the construction of Multi-level loop Nylon 66 fibers give to this collection the same feeling. Thanks to its beauty and elegance, Silver Sea is one of VOXFLOOR best-sellers products. It comes both in tiles and planks, and, according to its elegant look, it is recommended for commercial spaces.

13. ART.
KOLEKCJE

SILVER SEA



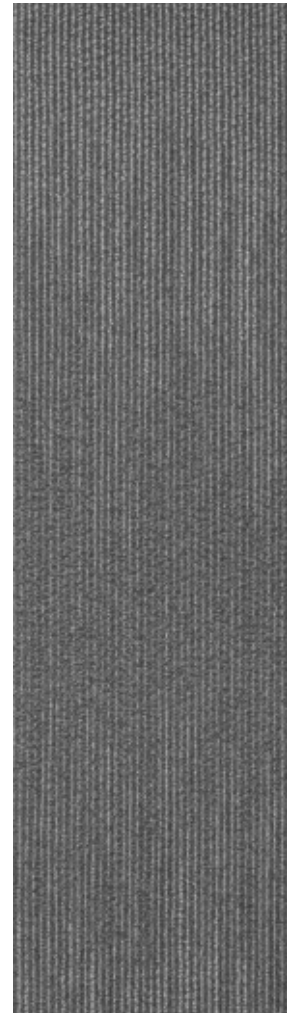
SILVER SEA



04



05



02



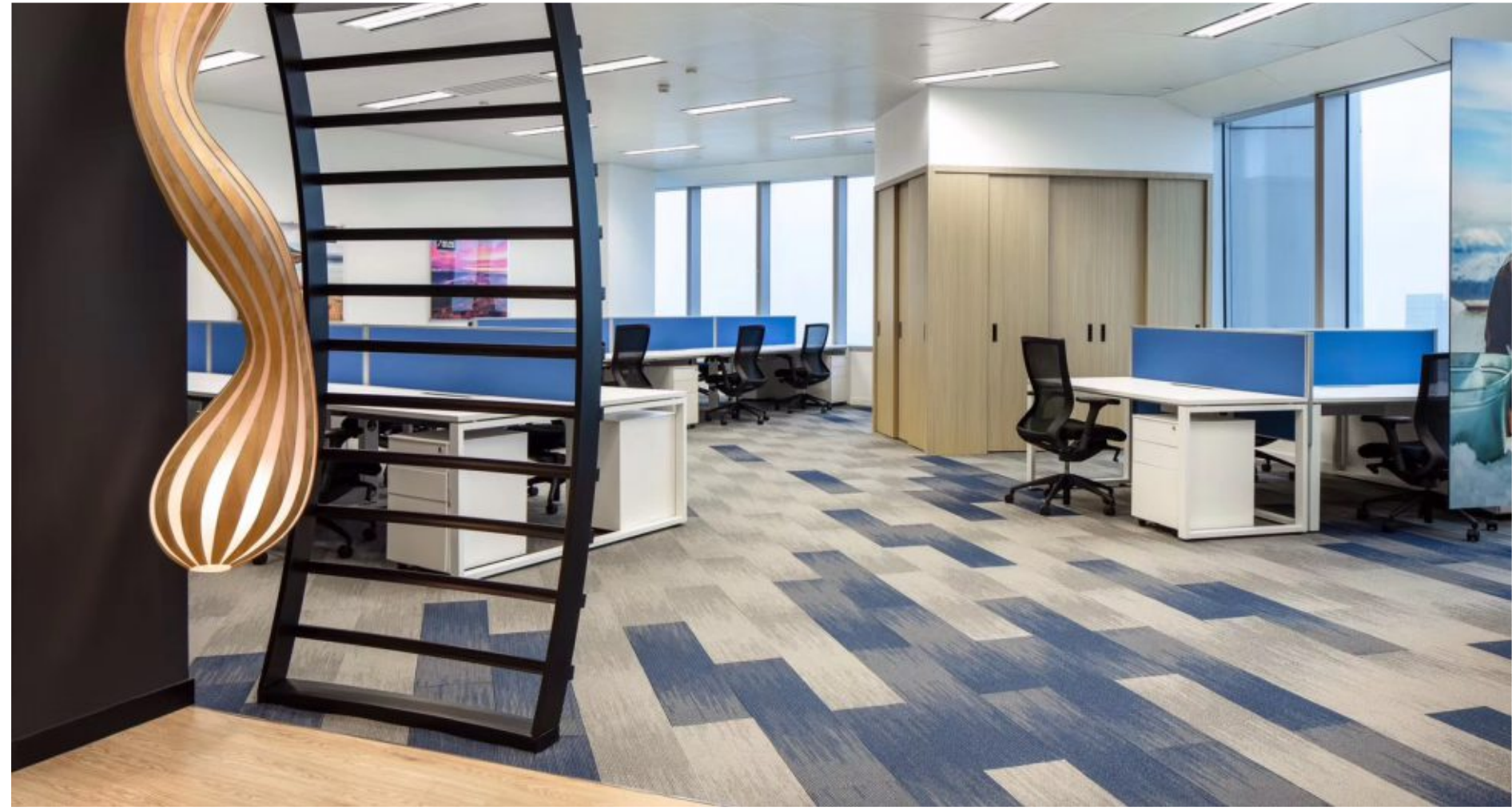
08



10



09



13.



ART. KOLEKCJE



WWW.VOXFLOR.EU

COLLECTION
2021



NARNIA SPECIFICATION

Style Name: NARNIA
Construction: Tufted Cut and Loop
Fiber: Voxflor Certified Nylon
Gauge: 1/10"
Stitches: 10 per inch
Average Pile Height: 4.0 mm ± 0.5 mm
Total Thickness: 6.6 mm ± 0.5 mm
Backing: EcoAce-Bac
Tile size: 50 cm * 50 cm

Narnia is part of the highlight products, featuring a resistant product with classic appeal. One of its best qualities is its compatibility with other products thanks to its elegant pattern. It can also be used with the SHAPES system to increase the design option. It is provided with the EcoAir-bac which gives the properties of lightness and therefore uses less material, making it more ecological without losing resistance making it perfect for any area or project

14. ART.
KOLEKCJE

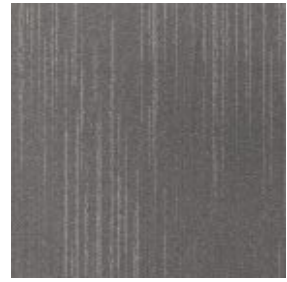
NARNIA



NARNIA



100



400



700



200



500



300



600



14.



ART. KOLEKCJE

WWW.VOXFLOR.EU

COLLECTION
2021



BAVARIA SPECIFICATION

Style Name: Bavaria
Construction: Multi-level Loop
Fiber: Universal Nylon 66
Gauge: 1/12"
Stitches: 11 per inch
Average Pile Height: 4.0 mm ± 0.5 mm
Total Thickness: 6.6 mm ± 0.5 mm
Backing: EcoAce-Bac
Tile size: 50 cm * 50 cm

Bavaria is one of the most classical VOXFLOOR collections. With its distinctive, elegant and sober design, Bavaria offers a strong features both in texture and construction, since it provides a Nylon 6,6 yarn with a Multi-level loop. It can be used in ashlar displacement to maintain its straight and fluid nature or in quarter turn to break the flooring geometry and generate a multi-directional feeling in the space.

BAVARIA

17. ART.
KOLEKCJE

BAVARIA



01



04



07



10



02



05



08



11



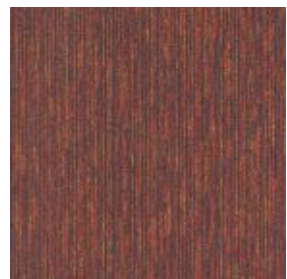
03



06



09



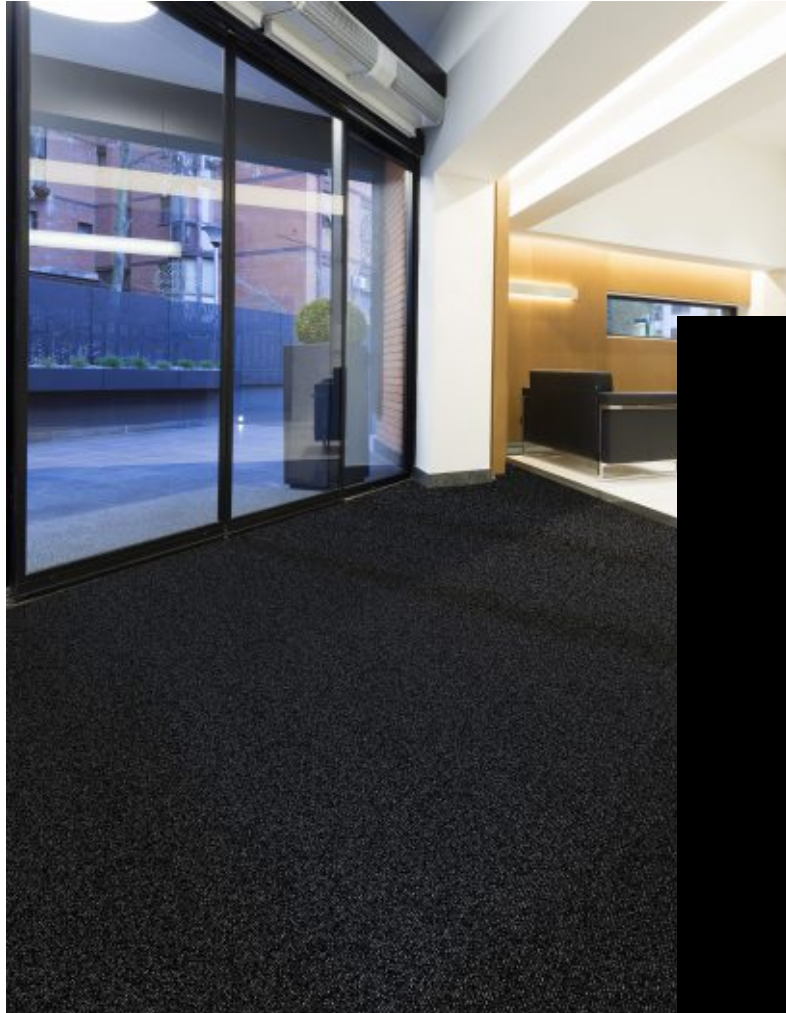
12



17.



ART. KOLEKCJE



WWW.VOXFLOR.EU

COLLECTION 
2021



TRENCH SPECIFICATION

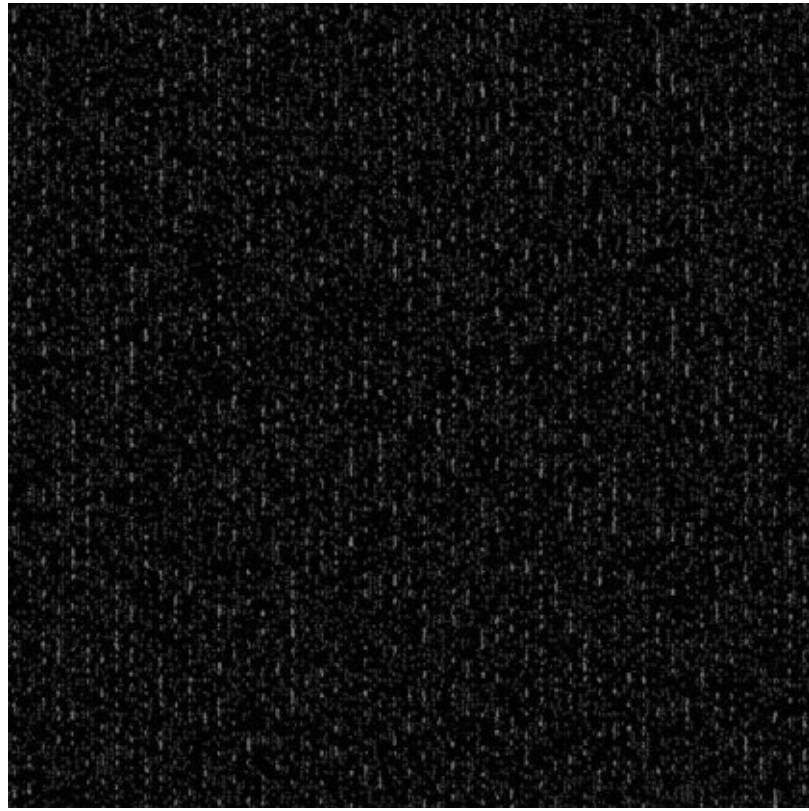
Style Name: TRENCH
Construction: Tufted Cut and Loop
Fiber: PA Voxflor Certified / Aquafil hard yarn
Gauge: 1/12"
Stitches: 11 per inch
Average Pile Height: 4.0 mm ± 0.5 mm
Total Thickness: 6.6 mm ± 0.5 mm
Backing: EcoAce-Bac
Tile size: 50 cm * 50 cm

Trench Dike is the solution VOXFLOOR offers for the first entrance meters. With its incredibly strong fibers, it doesn't get effected at all by heavy traffic, dirt or wet. Its dark colors helps to have a strong division with the rest of the flooring and at the same time, the accents dots color, half hidden into its texture, provide that design touch that ensure a unique appeal.

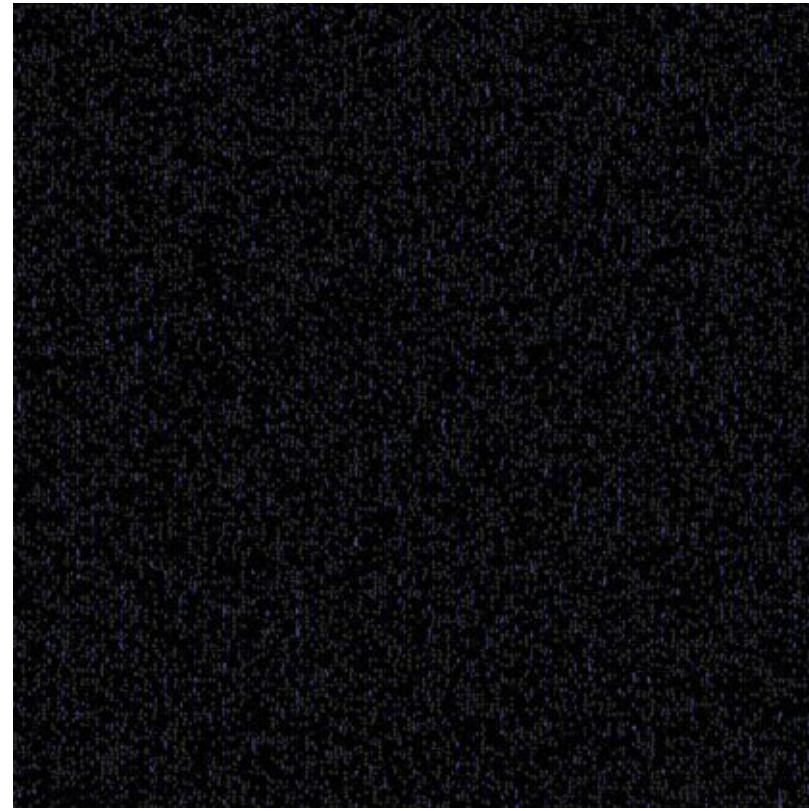
18. ART. 
KOLEKCJE



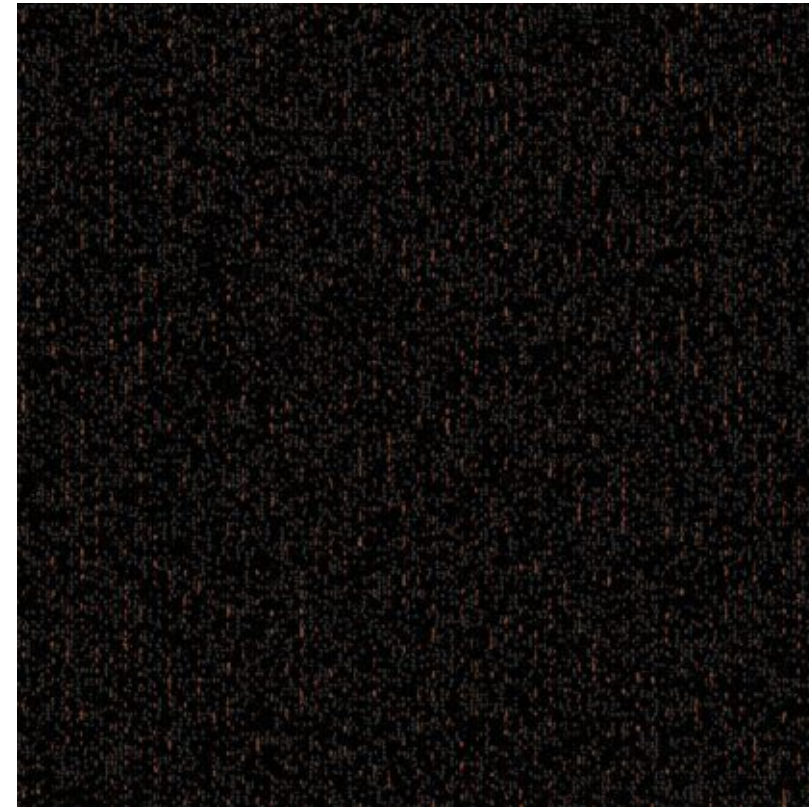
TRENCH



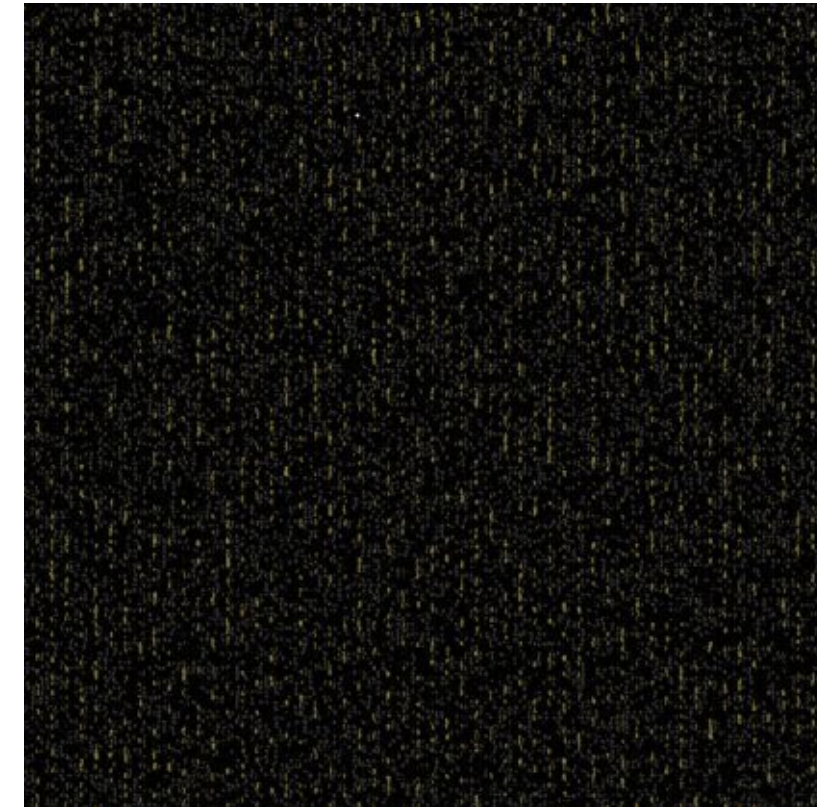
01



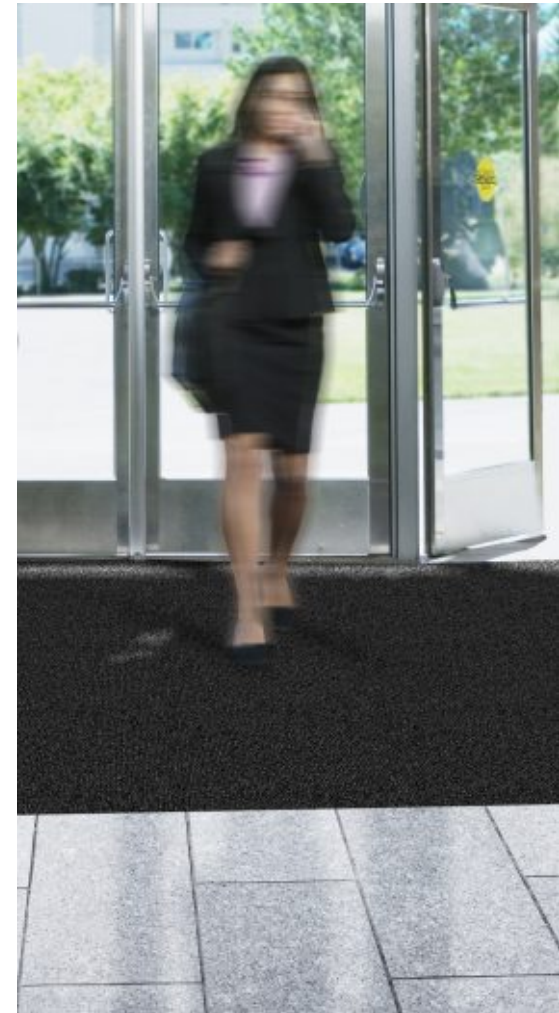
02



03



04



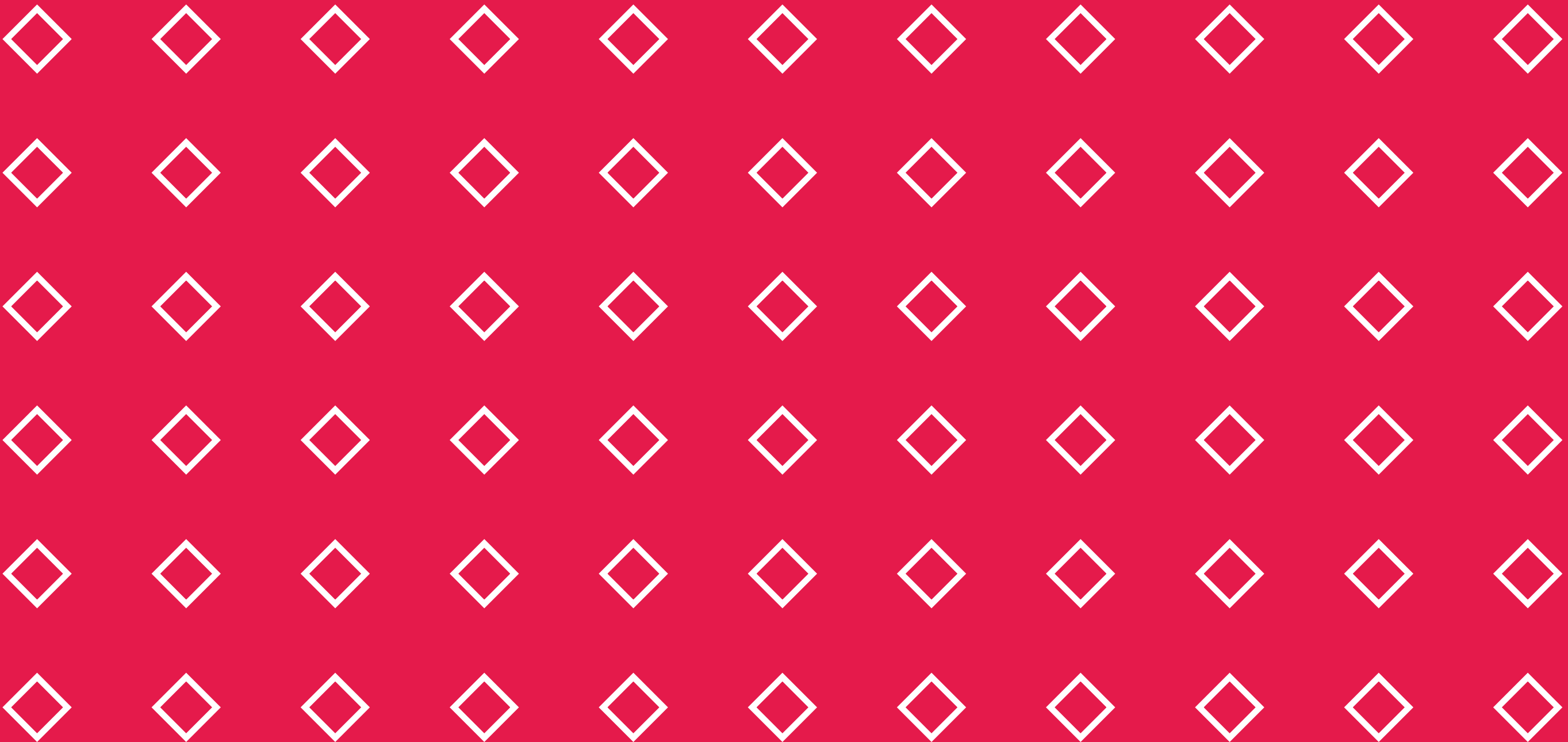
18.



ART. KOLEKCJE

MASZE

BESTSELLERY



COLLECTION
2021

WWW.VOXFLOOR.EU

WWW.VOXFLOR.EU

COLLECTION
2021



VOXFLOR®
EUROPE

EUROGARDEN

SPECIFICATION

Style Name: EUROGARDEN
Construction: Multi-level Loop & Tip Shear
Fiber: Invista Antron Nylon 66
Gauge: 1/12"
Stitches: 11 per inch
Average Pile Height: 4.0 mm ± 0.5 mm
Total Thickness: 6.6 mm ± 0.5 mm
Backing: EcoAce-Bac
Tile size: 50 cm * 50 cm

Eurogarden means infinite colors. Thanks to its yarn dyed Nylon 66 construction, it offers every possible color. Its standard production is about 100 different colors but thanks to the always possible customization, it can be offered in the desired color every time. In addition to this, it provides a multi-level designed pattern that breaks the static feeling given by the plain color, defining a new category in monochrome products.

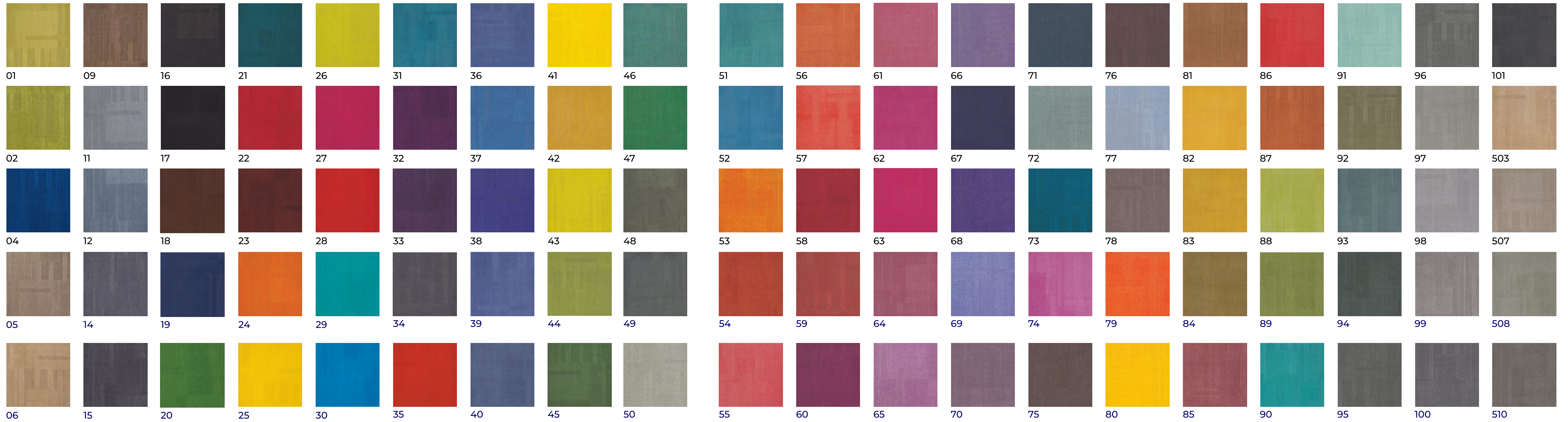
19. NASZE
BESTSELLERY



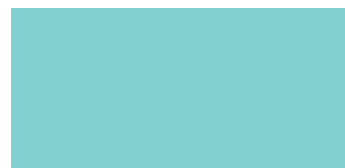
EUROGARDEN



EUROGARDEN



19.



513

NASZE
BESTSELLERY

WWW.VOXFLOR.EU

COLLECTION 
2021



SPACEWALK

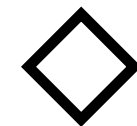
SPECIFICATION

Style Name: SPACEWALK
Construction: Multi-level Loop / Colordot
Fiber: Voxflor Certified Nylon
Gauge: 1/12"
Stitches: 10 per inch / 11 per inch
Average Pile Height: 4.0 mm ± 0.5 mm
/ 5.0 mm ± 0.5 mm
Total Thickness: 6.6 mm ± 0.5 mm
8.0 mm ± 0.5 mm / 9.0 mm ± 0.5 mm
Backing: EcoAce-Bac
Tile size: 25 cm * 100 cm

Inspired by the Earth surface, seen from outer space, Spacewalk offers a pattern which can be defined as New Classic. Spacewalk is composed by three products, which shares the same neutral colors, based on grays and beige tones, and different construction and pile weight. By mixing different products with the same colors, or different colors of the same product or even both, the options given by Spacewalk are limitless.

20. **NASZE** BESTSELLERY 

SPACEWALK



SPACEWALK



100-01



100-02



100-03



100-04



100-05



200-01



200-02



200-03



200-04



200-05



300-01



300-02



300-03



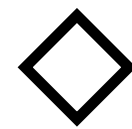
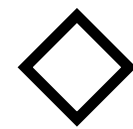
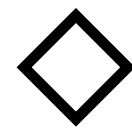
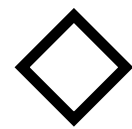
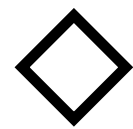
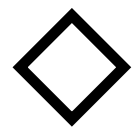
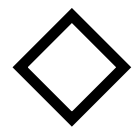
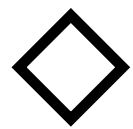
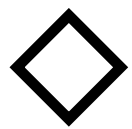
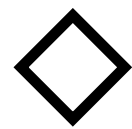
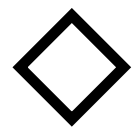
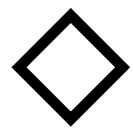
300-04



300-05



20.



NASZE
BESTSELLERY



WWW.VOXFLOR.EU

COLLECTION
2021

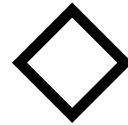


MUNDI SPECIFICATION

Style Name: MUNDI
Construction: Colordot
Fiber: PA Antron Legacy / Pa Voxflor Certified
Gauge: 1/10"
Stitches: 9 per inch
Average Pile Height: 5.0 mm ± 0.5 mm
Total Thickness: 9.0 mm ± 0.5 mm
Backing: EcoAce-Bac
Tile size: 25 cm * 100 cm

Mundi collection is composed by a series of four different products, developed on five tones of gray. Base represents the root for the whole system, totally neutral, offers a solid and fresh background for young professional areas, dynamic commercial spaces and hospitality. Fossil and Misty are built up with the same texture of Base plus two strong pattern design. An eroded, aged net-like system for Fossil and a diffused melt for Misty, adding a strong color accent to the neutral scene. Moss is pure color, with shades of tone on tone, not to flatten its look. The four are left free to be used individually or in a homogeneous mix, according to the designer taste and will.

21. **NASZE**
BESTSELLERY





BASE 10000



BASE 20000



BASE 40000



BASE 50000



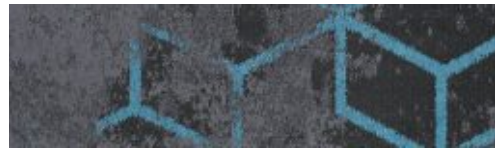
BASE 60000



MOSS 9897



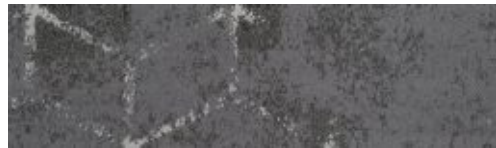
MOSS 5456



FOSSIL 12131



FOSSIL 26740



FOSSIL 49897



FOSSIL 51675



FOSSIL 67578



MOSS 10098



MOSS 7112



FOSSIL 12359



FOSSIL 22359



FOSSIL 405507



FOSSIL 50244



FOSSIL 61675



MOSS 7578



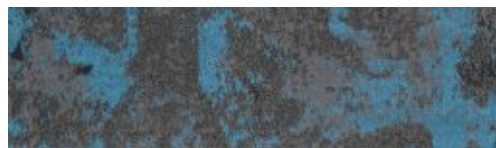
MOSS 3193



MISTY 19897



MISTY 27112



MISTY 42131



MISTY 55456



MISTY 67112



MOSS 1675



MOSS 0905



MISTY 16740



MISTY 205507



MISTY 40244



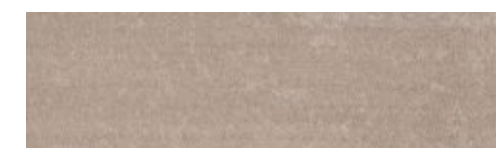
MISTY 505507



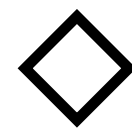
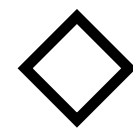
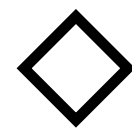
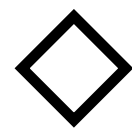
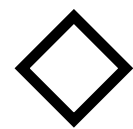
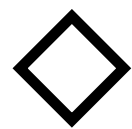
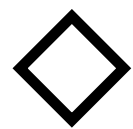
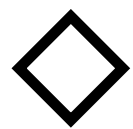
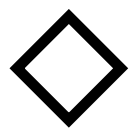
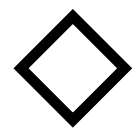
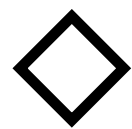
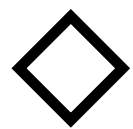
MISTY 63193



MOSS 2359



MOSS 05507



WWW.VOXFLOR.EU

COLLECTION
2021



VOXFLO[®]
EUROPE

COLORSPRING SPECIFICATION

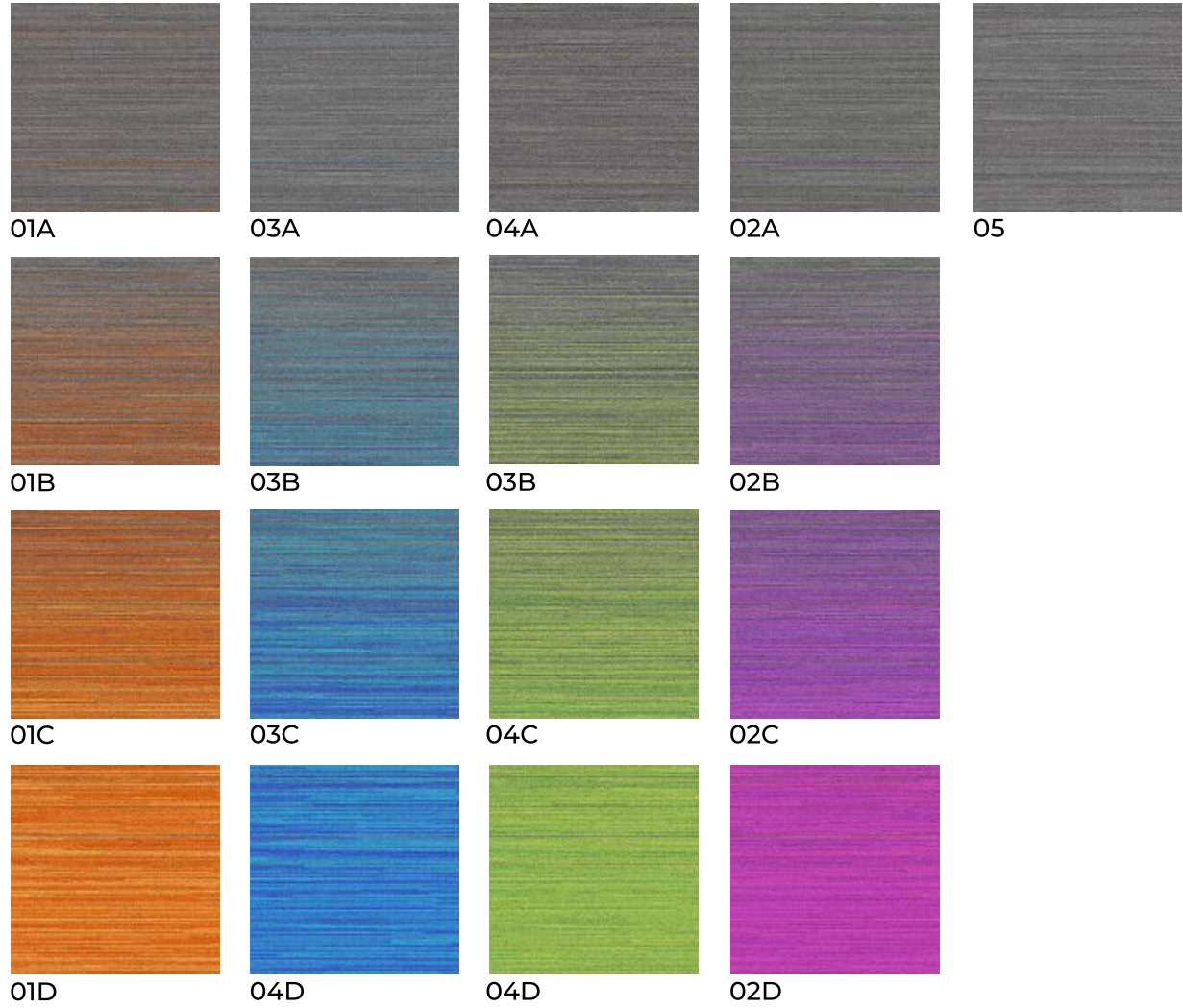
Style Name: COLORSPRING
Construction: Multi-level Loop & Tip shear
Fiber: PA 66 Solutia
Gauge: 1/10"
Stitches: 10 per inch
Average Pile Height: 4.5 mm ± 0.5 mm
Total Thickness: 7.1 mm ± 0.5 mm
Backing: EcoAce-Bac
Tile size: 50 cm * 50 cm

22. NASZE
BESTSELLERY

COLORSPRING



COLORSPRING



22.



NASZE
BESTSELLERY

WWW.VOXFLOR.EU

COLLECTION
2021



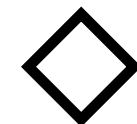
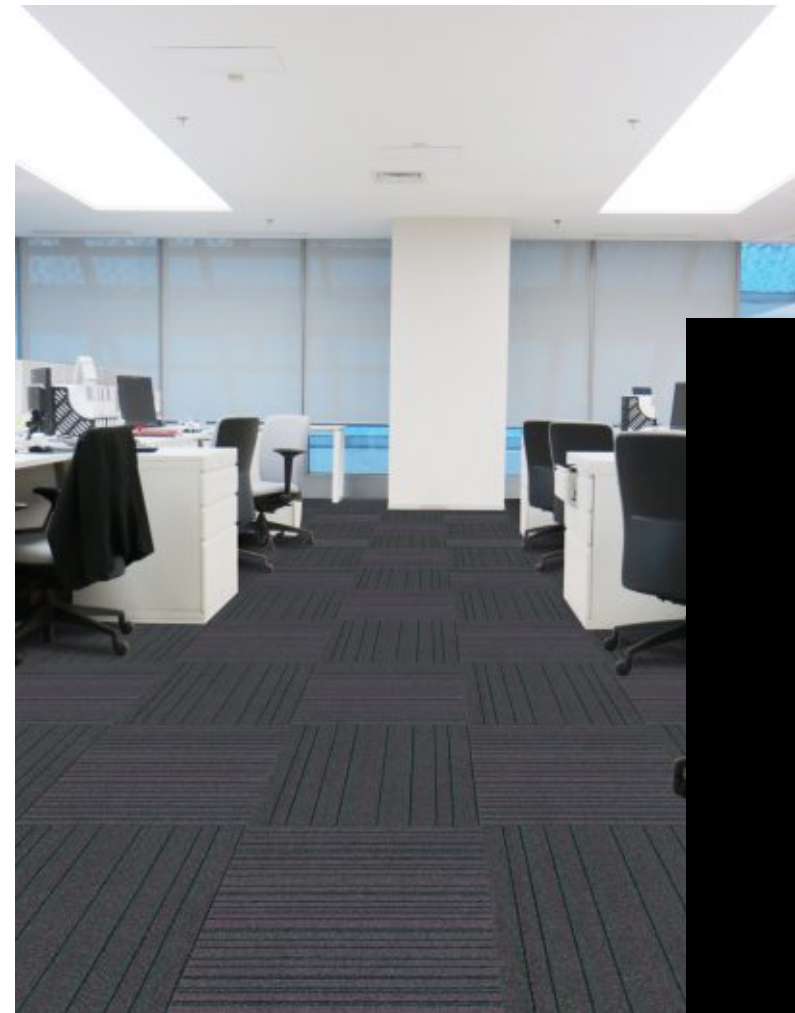
VOXFLOR®
EUROPE

HUSSAR WINGS

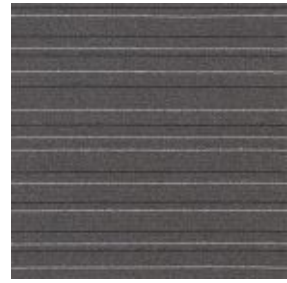
SPECIFICATION

Style Name: HUSSAR WINGS
Construction: Level loop
Fiber: PA 6,0 Invista Antron/PA Voxflor Certified
Gauge: 1/10"
Stitches: 10 per inch
Average Pile Height: 3.0 mm ± 0.5 mm
Total Thickness: 5.3 mm ± 0.5 mm
Backing: EcoAce-Bac
Tile size: 50 cm * 50 cm

23. NASZE
BESTSELLERY



HUSSAR WINGS



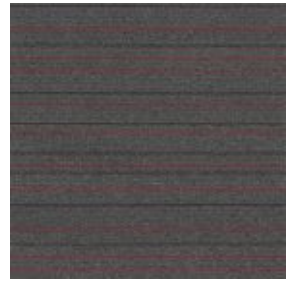
A-01



B-03



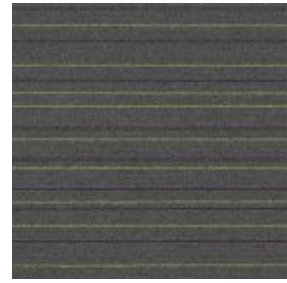
B-02



B-06



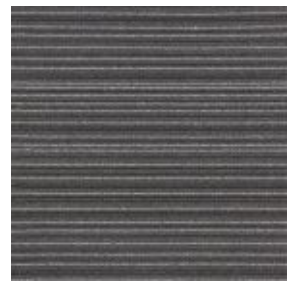
B-04



B-05



B-01



A-02



C-03



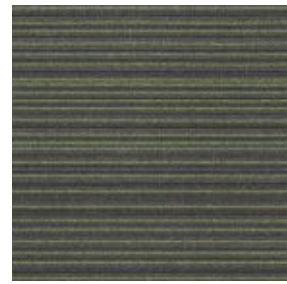
C-02



C-06



C-04



C-05



C-01



A-03



D-03



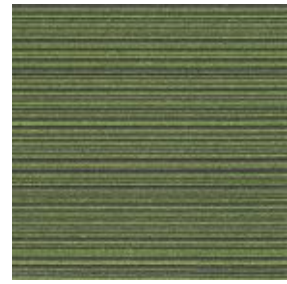
D-02



D-06



D-04



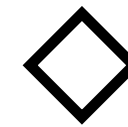
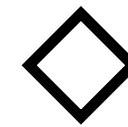
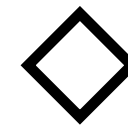
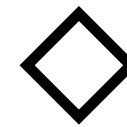
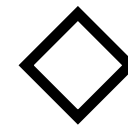
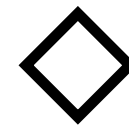
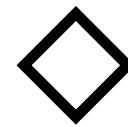
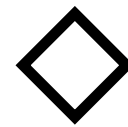
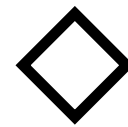
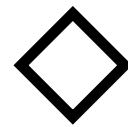
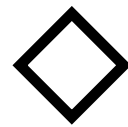
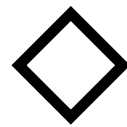
D-05



D-01



23.



NASZE
BESTSELLERY

WWW.VOXFLOR.EU

COLLECTION
2021

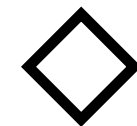


HUSSAR SPECIFICATION

Style Name: HUSSAR
Construction: Level loop
Fiber: PA 6.0 Invista Antron/PA Voxflor Certified
Gauge: 5/64"
Stitches: 10 per inch
Average Pile Height: 3.0 mm ± 0.5 mm
Total Thickness: 5.3 mm ± 0.5 mm
Backing: EcoAce-Bac
Tile size: 50 cm * 50 cm

Hussar is a perfect example of basic product. It's a low level-loop construction carpet which guarantees durability, easiness in maintenance, and a huge color selection to satisfy any need of commercial spaces. Thanks to the development of Hussar Wings, in which the basic color is overlapped with accent lines, the collection gets a boost in its potential. And with the addition of the SHAPES system the design option are infinite.

24. **NASZE**
BESTSELLERY



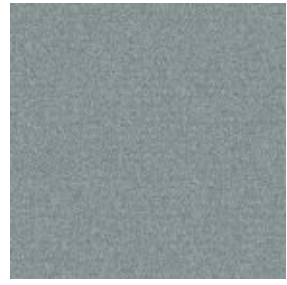
HUSSAR



01



05



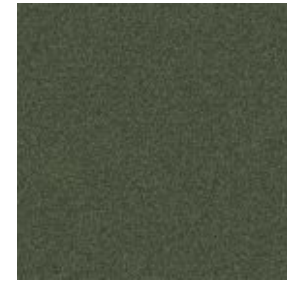
08



12



19



24



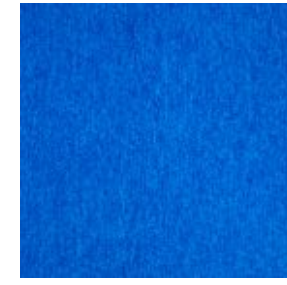
27



30



33



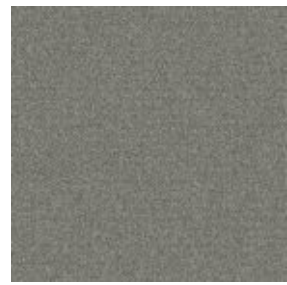
36



39



02



06



09



15



20



25



28



31



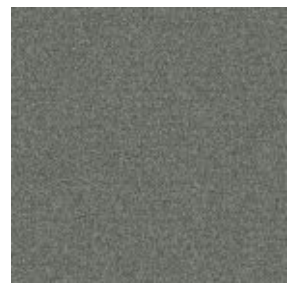
34



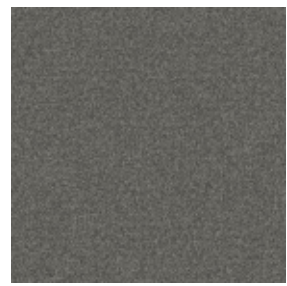
37



21



04



07



11



17



22



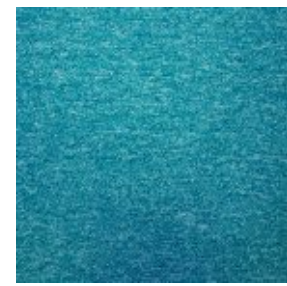
26



29



32

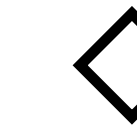
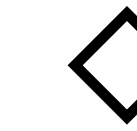
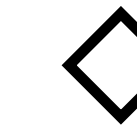
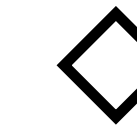
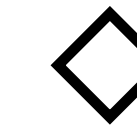
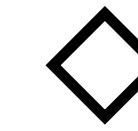
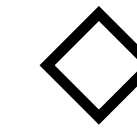
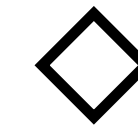
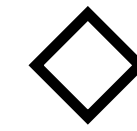
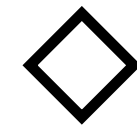
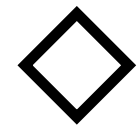


35

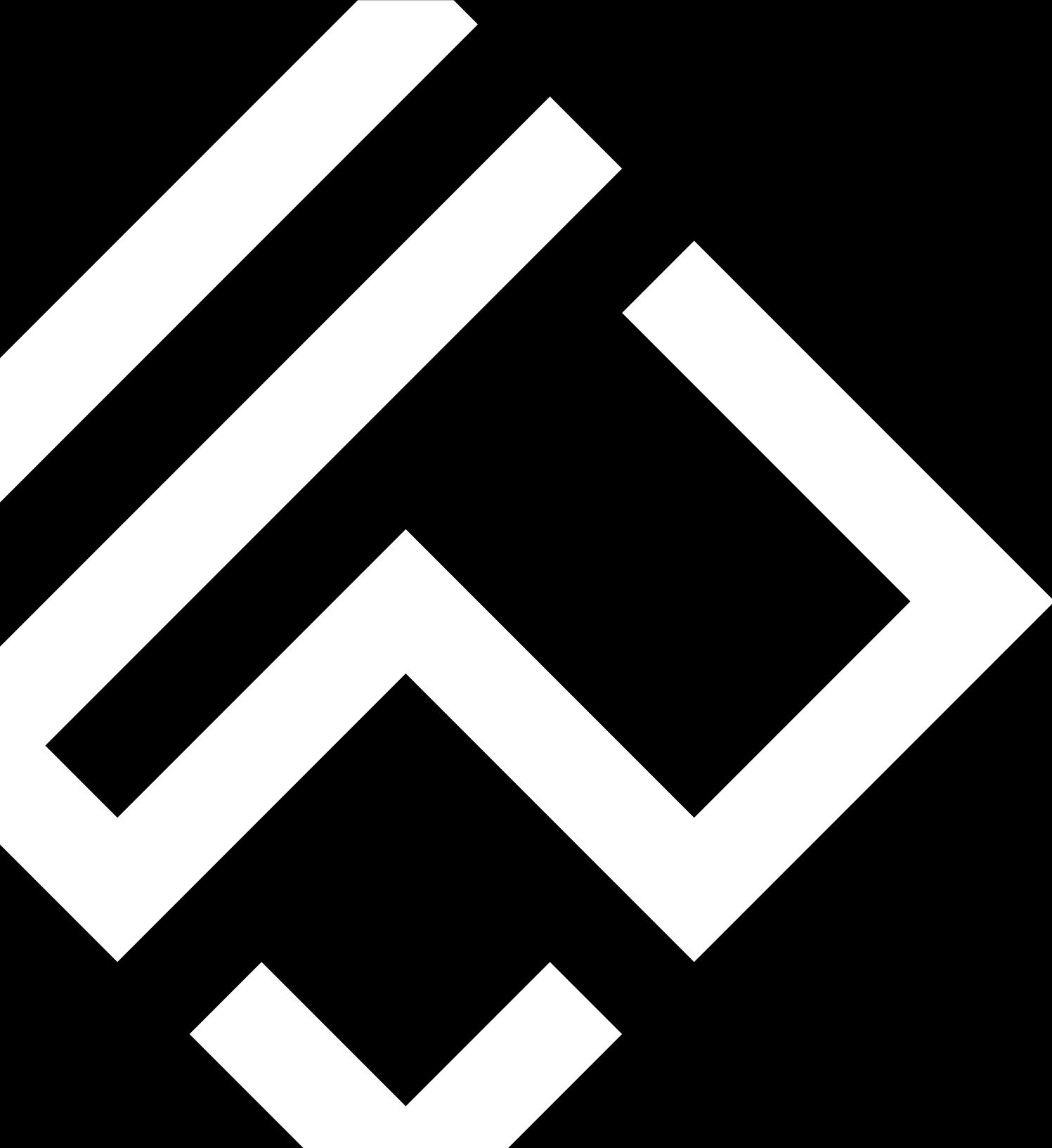


38

01.



NASZE
BESTSELLERY



▼
COLLECTION
2021

WWW.VOXFLOOR.EU