

URBAN FOREST

COLLECTION



VOXFLO®
passion and purpose

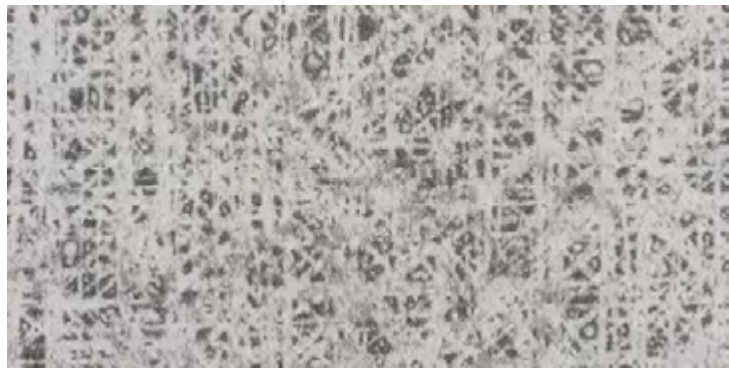
Urban Forest Collection is inspired by convergence-divergence: roots tend to be dense and solid (past), but branches and leaves diverge and extend to the sky (future). They crisscross, interpreting familiar textures in different ways.

The exterior skin of the building is designed with woven lines, creating light, shadow, entity and white space, which is then presented as sculpture. It has a distinct smell of land (past), while reminiscent of advanced technical images (future).

This collection makes people know more about the products and the design ideas they represent. Link different spaces and places with fresh visual language to stimulate people's desire to explore.



Root



Crown

Cover: Crown 11 Ashlar





Crown 11
Ashlar



Root 11
Ashlar



Carpet Tile: Root 11 | LVT: Above Woods H 01
Ashlar



Root 04
Ashlar



Root 07
Ashlar



Root 12
Ashlar



Root 12
Ashlar



Root 03
Ashlar



Crown 03
Ashlar



Crown 09
Ashlar



Crown 09
Ashlar



Crown 10
Ashlar



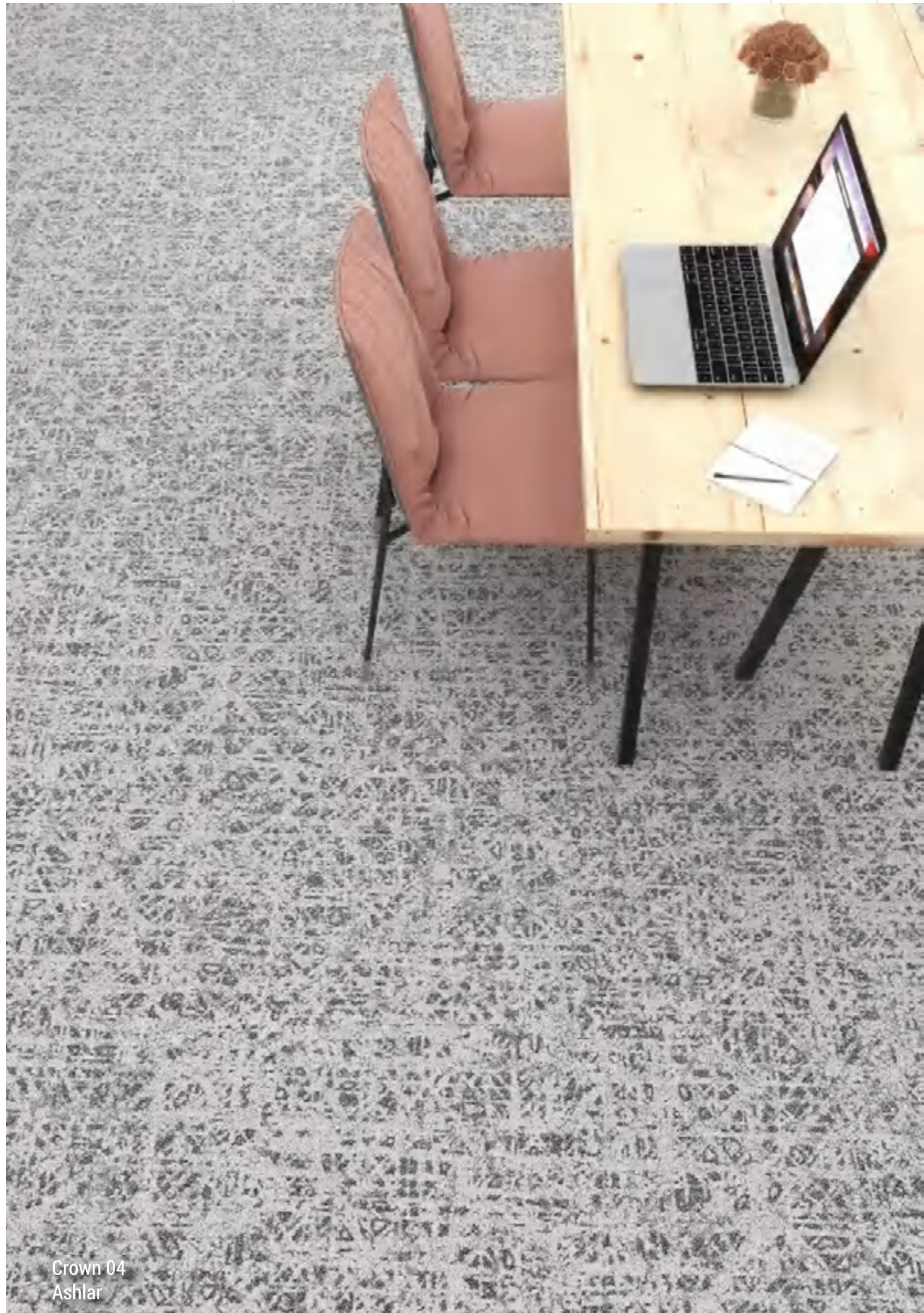
Crown 12
Ashlar



Crown 10
Ashlar



Crown 11 | 07
Ashlar



Crown 04
Ashlar



Crown 12
Ashlar

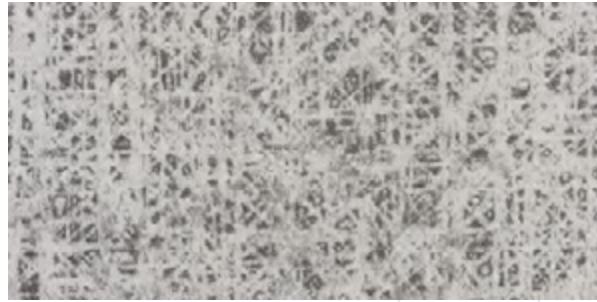


Crown 09
Ashlar

COLORS



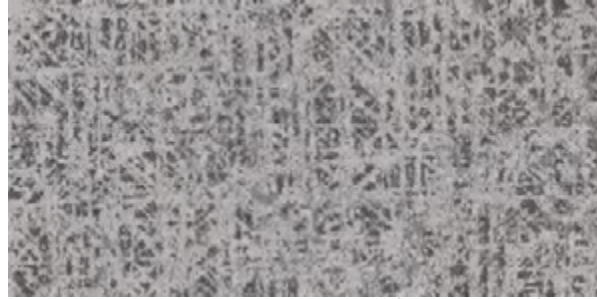
Root 11



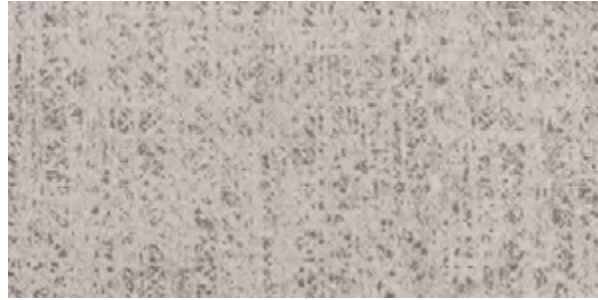
Crown 11



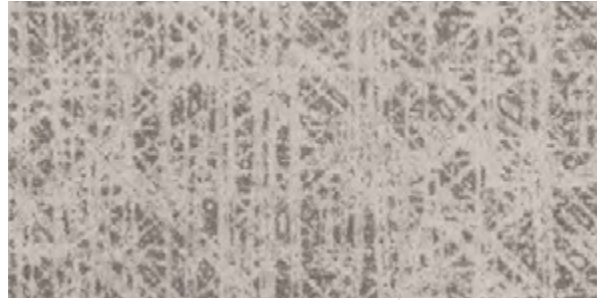
Root 04



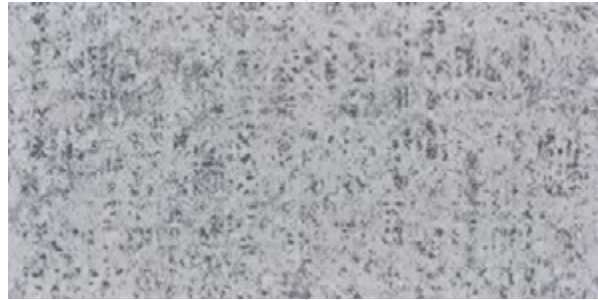
Crown 04



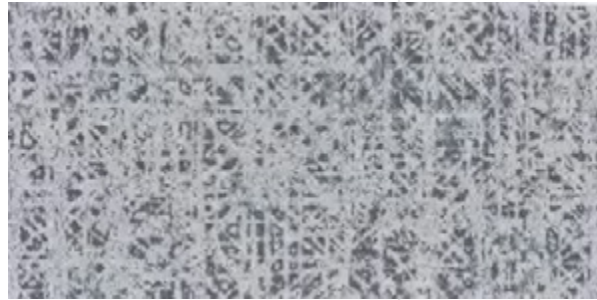
Root 12



Crown 12



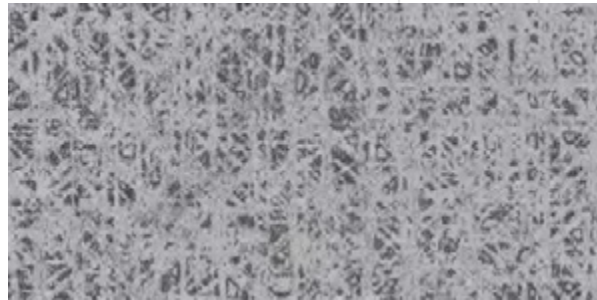
Root 03



Crown 03



Root 07



Crown 07



Root 09



Crown 09



Root 10

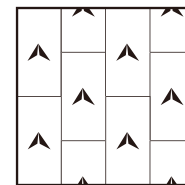


Crown 10

Specifications

Style Name:	Crown/Root
Construction:	Multi-Level loop
Fiber:	Voxflor® Certified Nylon
Gauge:	1/10"
Stitches:	10 per inch
Pile Weight:	24 OZ/yd ²
Average Pile Height:	5.0 ± 0.5mm
Backing:	EcoAce-Bac® Pro
Tile size:	50cm*100cm
Total Thickness:	9.0 ± 0.5 mm
Area of Use:	Commercial – Heavy Duty
Anti-microbial:	Ultra Fresh Treatment (Available)
Flammability:	ASTM E648 Class I, GB8624-2012 B1(C)
Smoke Density:	ASTM E662 Less than 450, GB/T 8627-1999
Static Propensity:	AATCC-134≤3.5 KV, GB/T 18044-2008

Installation Methods



Ashlar

Manufacture System

SOLAR
made carpet

VOXFLOOR builds its own solar power generation system and use clean energy to produce in a sustainable way.



An Environmental Product Declaration (EPD) tells the life cycle story of a product in a single, comprehensive report. The EPD provides information about a product's impact upon the environment, such as global warming potential, smog creation, ozone depletion and water pollution.



Administered by the Singapore Environment Council (SEC) since 1999, It is Singapore's leading environmental standard and certification mark with over 3800 unique products certified across 43 countries.

Credits Contribution to:



LEED (Leadership in Energy and Environmental Design) is the most widely used green building rating system in the world. LEED certification is a globally recognized symbol of sustainability achievement and leadership.



Our manufacture system has been certified under ISO 9001, ISO 14001 and ISO 45001, which means with the management, production facility and the strict quality controls, VOXFLOOR® represents qualified and trusty products.



EcoAce-Bac®
GLP No. : 100231

Green Label Plus is an independent testing program that identifies carpet, adhesives, and cushion with very low emissions of VOCs to help improve indoor air quality.



VOXFLOOR recommends using its own carpet tile tackifier with rust inhibitor. It is an EC-1 PLUS certified adhesive.



Ultra-Fresh is a portfolio of antimicrobial treatments developed by Thomson Research Associates, Inc. Customer can choose this High-Performance Antimicrobial Technology.



WELL is the leading tool for advancing health and well-being in buildings globally. Register your office, building or other space to leverage WELL's flexible framework for improving health and human experience through design.



Declare is a transparency platform to share and find healthy building products. VOXFLOOR's EcoAce-Bac® Collection reach "Red List Free" grade.



CE marking indicates that a product has been assessed by the manufacturer and deemed to meet EU safety, health and environmental protection requirements.



Cradle to Cradle Certified® is the global standard for products that are safe, circular and responsibly made. It is to ensure the impact of their products on people and planet is a positive one.



Crown 03
Ashlar



VOXFLOR®

www.voxflor.com

Shanghai **Headquarters**

T +86 021 62989325

Milano **Creative Studio**

T +39 3885863150

China **Branch Offices**

Beijing/ Guangzhou/ Shenzhen/ Xiamen

